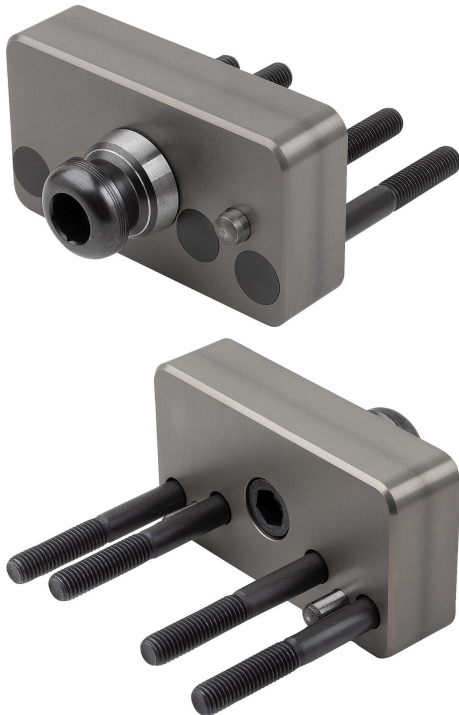


Pallet coupler for UNILOCK clamping module EGM 110-75

Item description/product images



Description

Material:

Aluminium.

Note:

The pallet coupler for the UNILOCK clamping module EGM 110-75 serves as an interface between clamping pallet and clamping module in a robot automated system. The compact design of the pallet coupler permits pallets to be loaded extremely close to the machine table.

The pallet coupler is drawn in by the clamping module on the robot via the UNILOCK clamping bolt. The rotation lock around the central longitudinal axis is provided by a cylindrical pin on the front side of the pallet coupler.

Assembly:

The maximum torque of the fastening screws must be observed when mounting the pallet coupler on the pallet.

Tightening torque for DIN EN ISO 4762 M12 10.9 fastening screw: 92 Nm.

Advantages:

- Compact design
- Low weight.
- Positioning via short taper.

Supplied with:

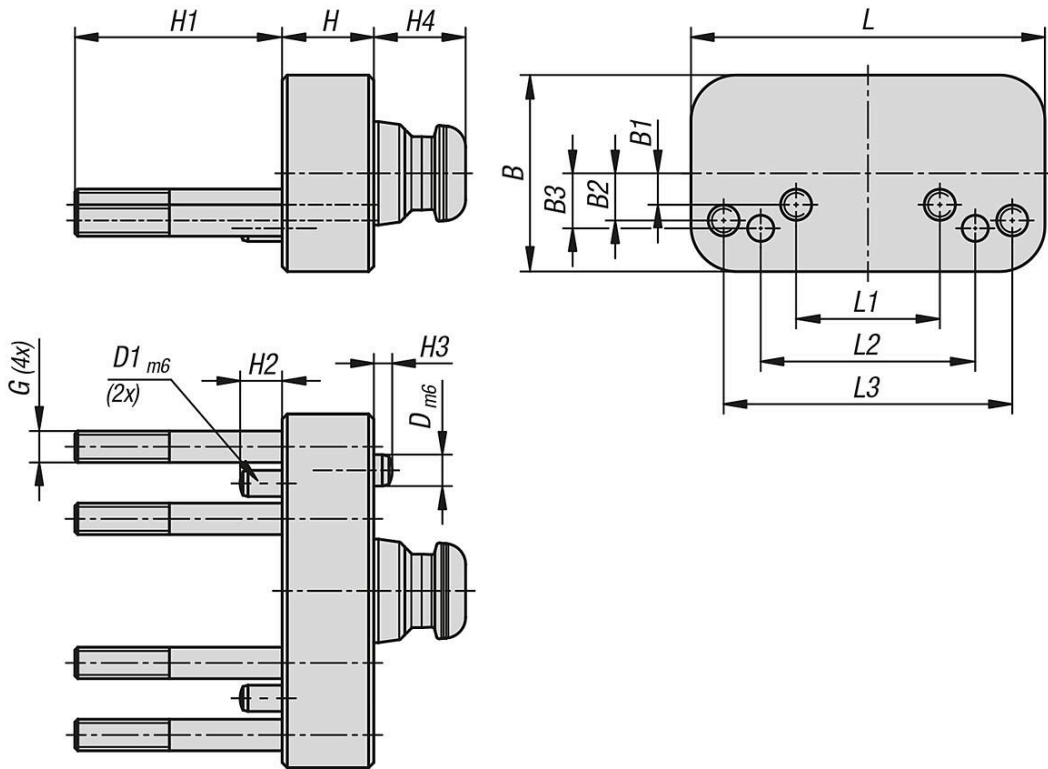
- 1x pallet coupler with clamping bolt.
- 4x DIN EN ISO 4762 M12 10.9 fastening screws.

Accessory:

UNILOCK clamping module EGM 110-75 (K1973).

Pallet coupler for UNILOCK clamping module EGM 110-75

Drawings



Overview of items

Pallet coupler for UNILOCK clamping module EGM 110-75

Order No.	Form definition	B	B1	B2	B3	D	D1	G	H	H1	H2	H3	H4	L	L1	L2	L3
K2046.1350750351	with rotation lock	75	12	18	21	12	10	M12	35	79	16	7	35	135	55	82	110