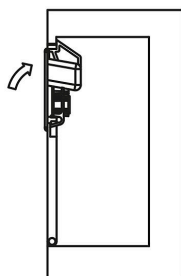
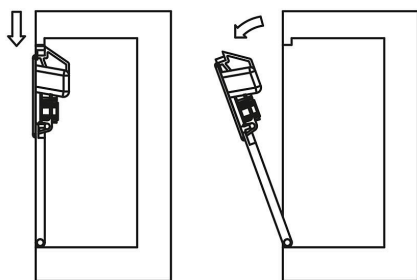


Snap locks, plastic with recessed grip, snap-in

Item description/product images



Description

Material:

Lock ABS.

Spring stainless steel 1.4310.

Version:

Lock black.

Spring bright.

Note:

These snap locks are designed for flush installation in doors, hatches and covers.

Available in six different sizes for different door leaf thicknesses.

Flammability rating: listed UL94-HB.

Type of operation:

When the grip is pressed down, the latch retracts and the door can be opened. When the door is pushed to, a spring automatically latches it shut.

Application:

- Automobile industry
- Medical technology
- Machine construction
- Equipment construction
- Industrial control cabinets

Assembly:

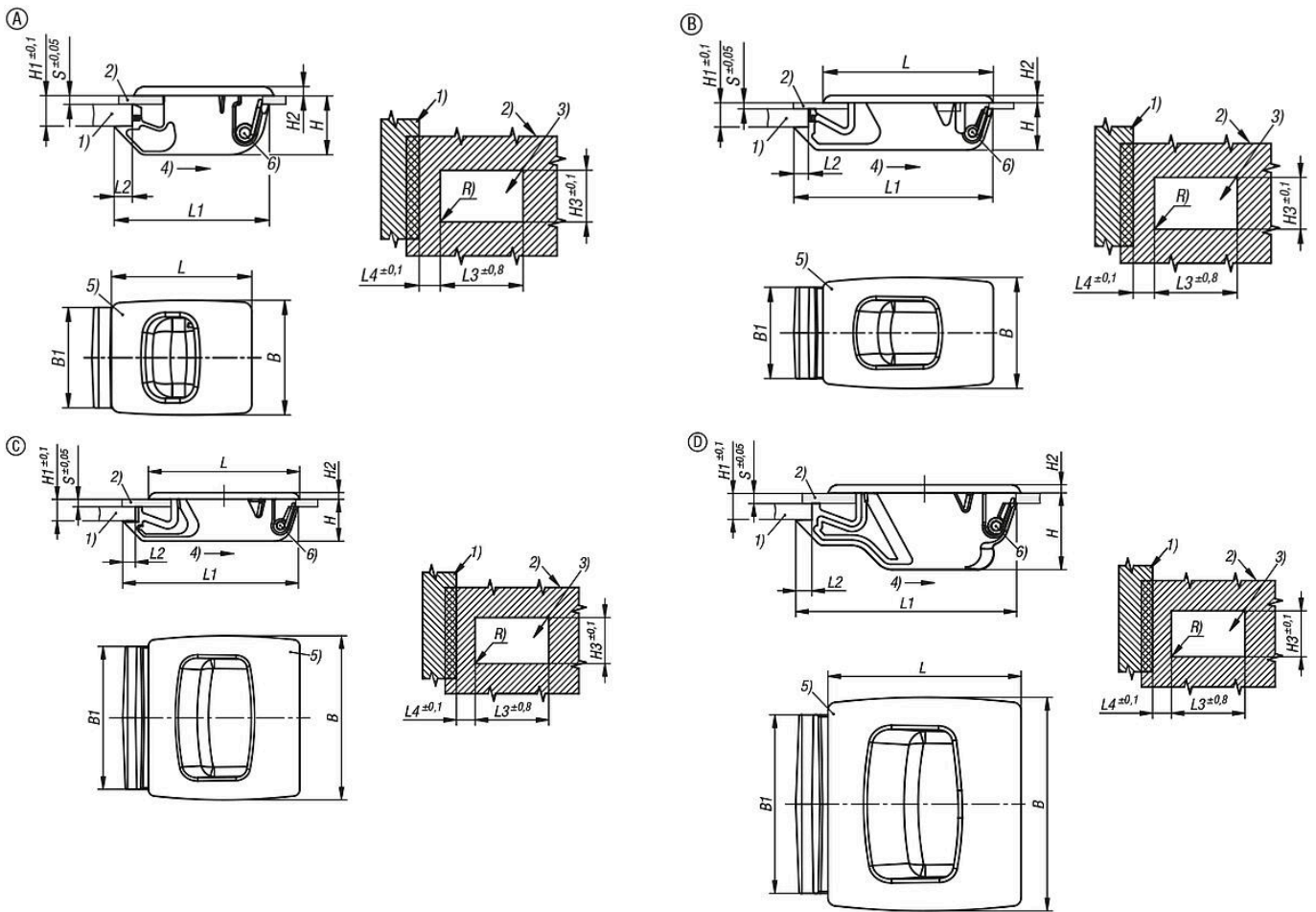
1. Produce a burr-free mounting cutout as shown in the drawing.
2. Insert the lock into the cutout from the front and push forwards.
3. Press the lock down to clip in.

Drawing reference:

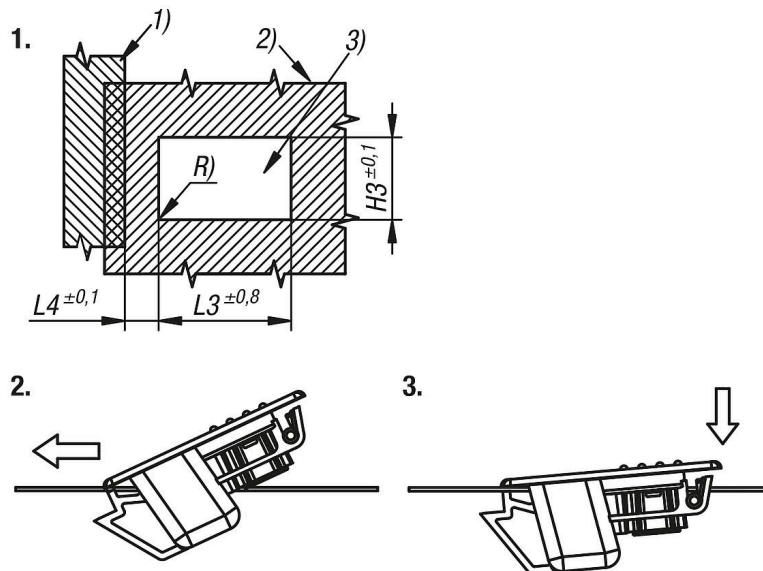
- 1) Frame
- 2) Door leaf
- 3) Mounting cutout
- 4) Actuation direction
- 5) Lock
- 6) Spring

Snap locks, plastic with recessed grip, snap-in

Drawings



Assembly:



Overview of items

Snap locks, plastic with recessed grip, snap-in

Snap locks, plastic with recessed grip, snap-in

Overview of items

Order No.	Form	Form definition	B	B1	H	H1 = Total holding area	H2	H3	L	L1	L2	L3	L4	R	S = Door thickness in mm	Temperature range °C
K2010.1215250	A	-	25,2	22,1	13	6,7	2	22,4	31	35,3	4	22	8,5	max. 0,25	1,2	-40 to 60
K2010.1515250	A	-	25,2	22,1	13	6,7	2	22,4	31	35,3	4	22	8,5	max. 0,25	1,5	-40 to 60
K2010.1315300	B	small	30,5	25,1	13	6,7	2	25,4	47	55	4	38,1	12,7	max. 0,25	1,3	-40 to 60
K2010.1615300	B	small	30,5	25,1	13	6,7	2	25,4	47	55	4	38,1	12,7	max. 0,25	1,6	-40 to 60
K2010.2015500	C	medium	50,8	44,2	13	6,7	2	44,5	47	54,6	4	38,1	12,7	max. 0,25	2	-40 to 60
K2010.2221500	D	large	52,9	44,2	19	6,7	2	44,5	48	56	4	38,1	12,7	max. 0,25	2,2	-40 to 60