

Panel suspensions Ø30 type I

Item description/product images



Description

Material:

Steel.

Version:

Electro zinc-plated.

Note:

For fastening plate materials to Ø30 mm OD round tubes and profile tubes.

Robust fastening elements for fastening plate materials. The heavy-duty steel clips are screwed to profile tubes and thus ensures a secure hold. Alternatively, the clips could be screwed to panel elements first. Then the complete element could be simply hung onto the tubular frame.

As a rule, a Form A panel suspension is placed in each corner. Panel suspensions Form B are used as supports for long panels. This reduces the deflection.

Please note when cutting the plates to size: If connectors are used, the plates require a notch of at least 5 mm or a circumferential strip of at least 5 mm machined into the area where the connectors are to go.

Supplied with:

Form A:

1 Panel suspension.

2 DIN 7504 self-drilling screws Form N 3.9x16, electro zinc-plated.

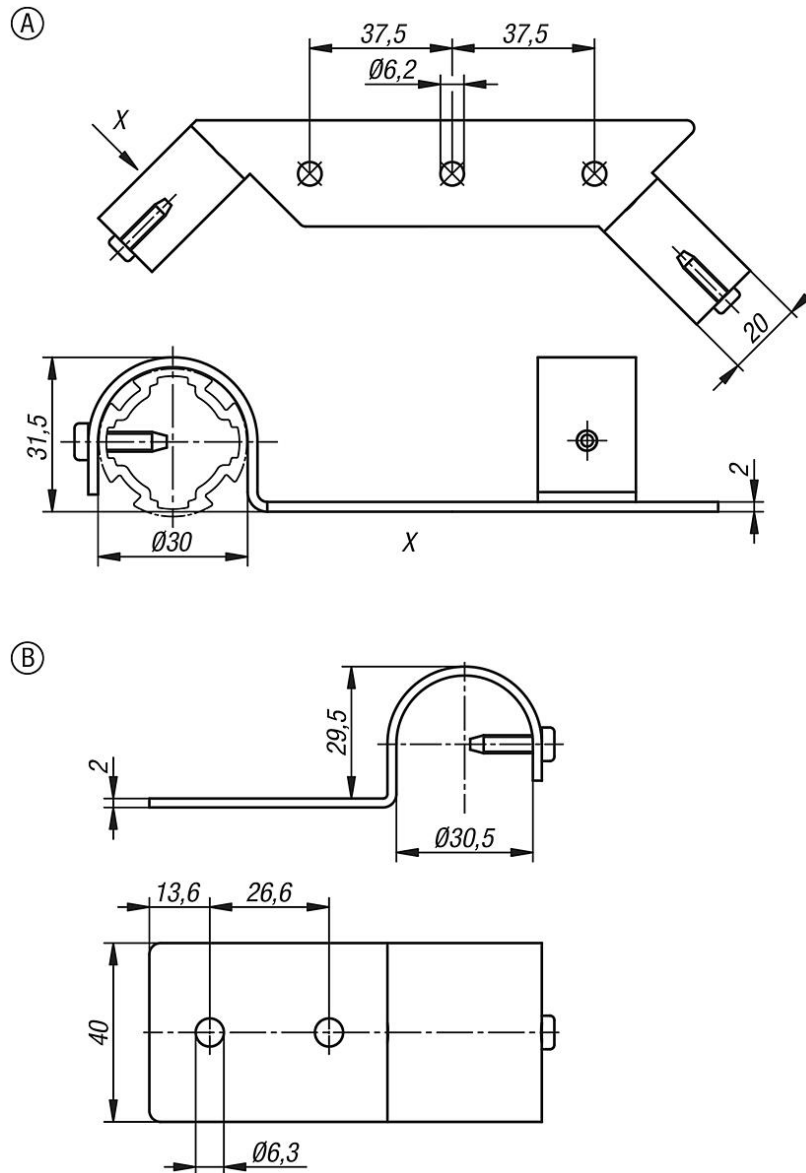
Form B:

1 Panel suspension.

1 DIN 7504 self-drilling screw Form N 3.9x16, electro zinc-plated.

Panel suspensions Ø30 type I

Drawings



Overview of items

Panel suspensions Ø30 type I

Order No.	Form	Form definition	Profile	ESD electrostatic discharging
K1997.301	A	both sides	Ø30	yes
K1997.302	B	single	Ø30	no