

Threaded inserts Ø30 type I

Item description/product images



Description

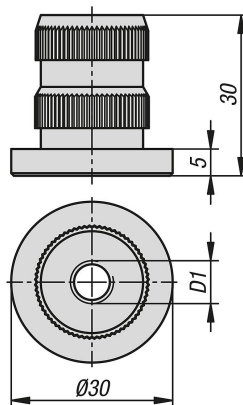
Material:
Aluminium.

Version:
Bright.

Note:
Suitable for profile tubes K1977 with 30 mm OD.

The threaded inserts are pressed into the end face of a Ø30 profile tube. They are suitable for mounting levelling feet, castors or other accessories.

Drawings



Overview of items

Threaded inserts Ø30 type I

Order No.	Profile	D1	ESD electrostatic discharging
K1992.06	Ø30	M6	yes
K1992.08	Ø30	M8	yes
K1992.10	Ø30	M10	yes
K1992.12	Ø30	M12	yes