

## Profile tube, aluminium Ø30 heavy duty type I

### Item description/product images



### Description

**Material:**

Aluminium EN AW-6063 T66 (AlMgSi 0.5 F25)

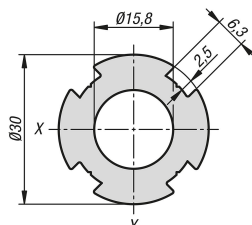
**Version:**

Artificially aged, natural colour anodised.

**Note:**

Reinforced aluminium profile for weight-optimised and slender constructions. The Ø30 connectors can be attached to the four clamping slots, positioned at 90° to each other, without any further processing of the profiles. These positive connections create extremely stable constructions. The connections can be extended at any time and also easily removed again.

### Drawings



### Overview of items

#### Profile tube, aluminium Ø30 heavy duty type I

Order No.	Profile	L	L max.	I <sub>x</sub> cm <sup>4</sup>	I <sub>y</sub> cm <sup>4</sup>	W <sub>x</sub> cm <sup>3</sup>	W <sub>y</sub> cm <sup>3</sup>	Moment of inertia torsion cm <sup>4</sup>	Profile area cm <sup>2</sup>	Approx. weight kg/m
K1978.00300X1000	Ø30	1000	6000	3,06	3,06	2,04	2,04	5	4,67	1,20