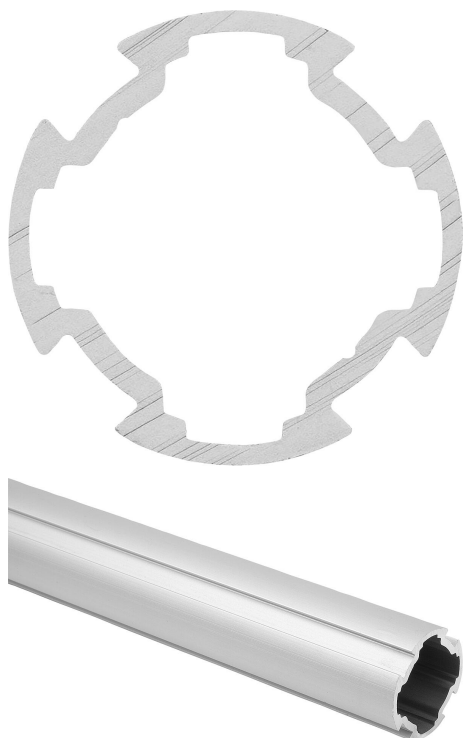


Profile tube, aluminium Ø30 type I

Item description/product images



Description

Material:

Aluminium EN AW-6063 T66 (AlMgSi 0.5 F25)

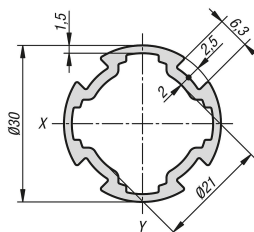
Version:

Artificially aged, natural colour anodised.

Note:

Lightweight aluminium profile for weight-optimised and slender constructions. The Ø30 connectors can be attached to the four clamping slots, positioned at 90° to each other, without any further processing of the profiles. These positive connections create extremely stable constructions. The connections can be extended at any time and also easily removed again.

Drawings



Overview of items

Profile tube, aluminium Ø30 type I

Order No.	Profile	L	L max.	I _x cm ⁴	I _y cm ⁴	W _x cm ³	W _y cm ³	Moment of inertia torsion cm ⁴	Profile area cm ²	Approx. weight kg/m
K1977.00300X1000	Ø30	1000	6000	1,71	1,71	1,14	1,14	1,36	1,97	0,53