

Screw rest inserts spherical, centring disc, prism, locating pin, revolving ball

Item description/product images



Description

Material:

Carbon steel.

Version:

Tempered and black oxidised.

Ball hardened.

Note:

Can be used with

K1941

K1943

K1944

K1233

K1945

K1946.010

Drawing reference:

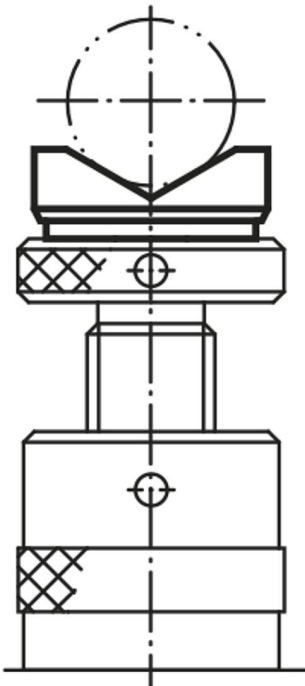
1) spherical

2) centring disc

3) prism

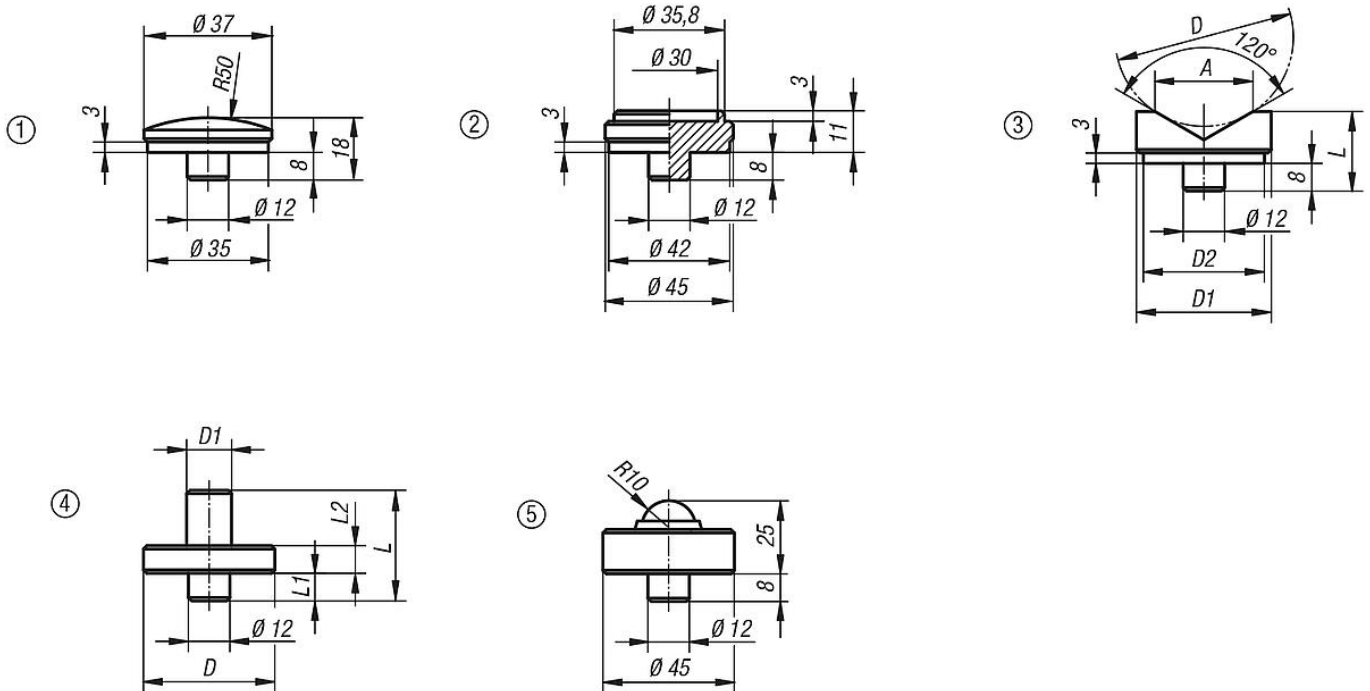
4) locating pin

5) revolving ball



Screw rest inserts spherical, centring disc, prism, locating pin, revolving ball

Drawings



Overview of items

Convex insert, centring plate, vee-block inserts, locating inserts, insert with revolving ball

Order No.	Item						
K1961.01	Ball end						
K1961.03	Centring plate						
Order No.	Item	D	D min.	D1	D2	L	A
K1961.02	Prism insert	50	10	45	42	23	32
K1961.021	Prism insert	100	22	65	62	38	56
Order No.	Item	D	D1	L	L1	L2	
K1961.04	Locating Insert	63	14	35	8	12	
K1961.041	Locating Insert	78	25	53	8	15	
Order No.	Item	Version 1	F max. kN				
K1961.05	Attachment	with revolving ball	30				