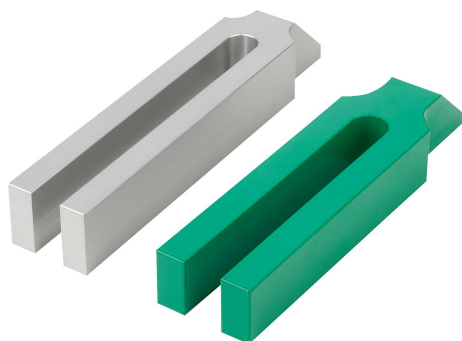


Clamp straps open U flat pin, steel or aluminium

Item description/product images



Description

Material:

Carbon steel or EN AW-7022.

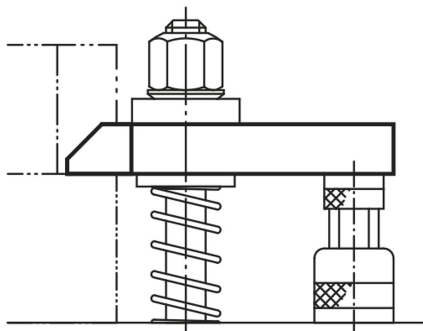
Version:

Steel painted.

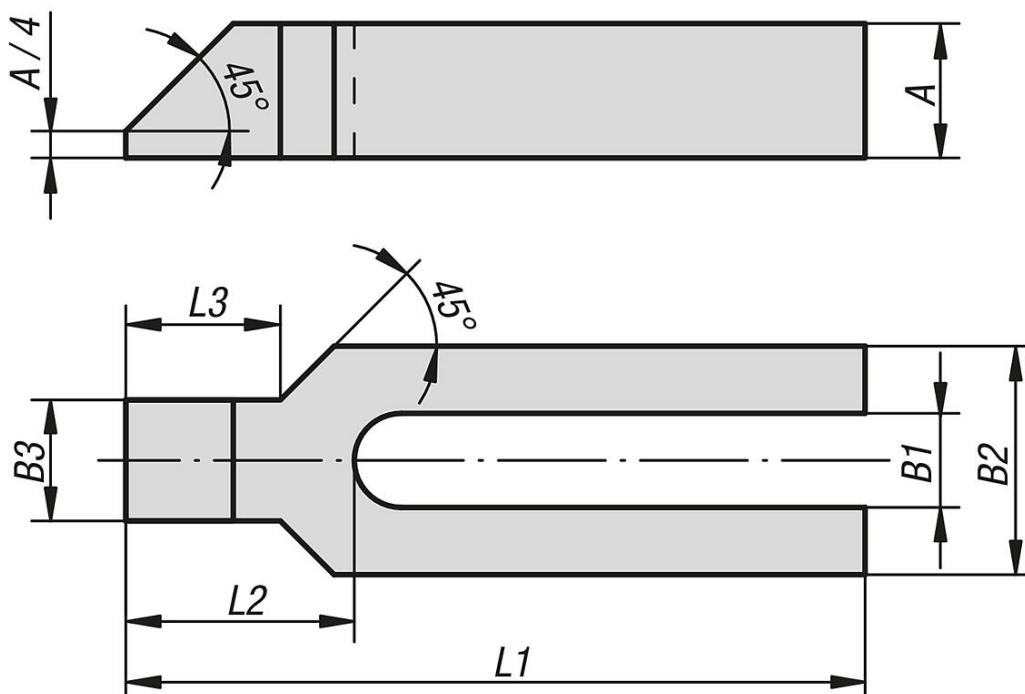
Aluminium bright.

Note:

When using spherical washers use the wide series K0729 Form G.



Drawings



Overview of items

Clamp straps open-U with flat pin, steel or aluminium

Clamp straps open U flat pin, steel or aluminium

Overview of items

Order No.	Main material	L1	A	B1	B2	B3	L2	L3	for screw
K1953.08	QT steel	100	15	9	30	16	32	18	M8
K1953.10	QT steel	125	20	11	30	20	38	24	M10
K1953.12	QT steel	160	25	14	40	24	47	30	M12/M14
K1953.121	QT steel	200	25	14	40	24	47	30	M12/M14
K1953.16	QT steel	200	30	18	50	28	57	36	M16/M18
K1953.161	QT steel	250	30	18	50	28	57	36	M16/M18
K1953.20	QT steel	250	40	22	60	35	68	45	M20/M22
K1953.201	QT steel	315	40	22	60	35	68	45	M20/M22
K1953.24	QT steel	250	40	26	70	43	83	56	M24
K1953.241	QT steel	315	40	26	70	43	83	56	M24
K1953.30	QT steel	315	50	34	80	50	88	56	M30/M32
K1953.301	QT steel	400	50	34	80	50	88	56	M30/M32
K1953.208	aluminium	100	15	9	30	16	32	18	M8
K1953.210	aluminium	125	20	11	30	20	38	24	M10
K1953.212	aluminium	160	28	14	40	24	47	30	M12/M14
K1953.2121	aluminium	200	36	14	40	24	47	30	M12/M14
K1953.216	aluminium	200	36	18	50	28	57	36	M16/M18
K1953.2161	aluminium	250	40	18	50	28	57	36	M16/M18
K1953.220	aluminium	250	40	22	60	35	68	45	M20/M22
K1953.2201	aluminium	315	48	22	60	35	68	45	M20/M22
K1953.224	aluminium	250	40	26	70	43	83	56	M24
K1953.2241	aluminium	315	48	26	70	43	83	56	M24
K1953.230	aluminium	315	50	34	80	50	88	56	M30/M32
K1953.2301	aluminium	400	50	34	80	50	88	56	M30/M32