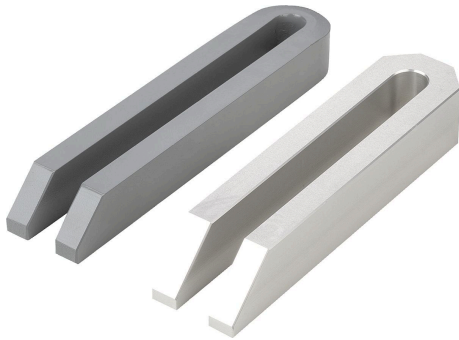


# Clamp straps open U DIN 6315, steel or aluminium

## Item description/product images



### Description

**Material:**

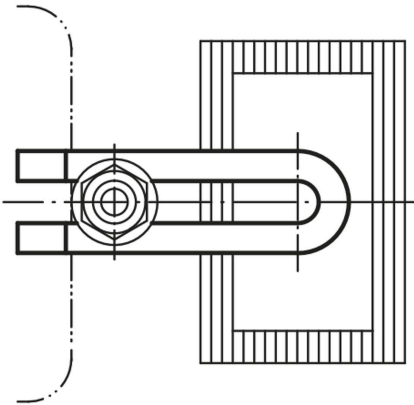
Carbon steel or EN AW-7022.

**Version:**

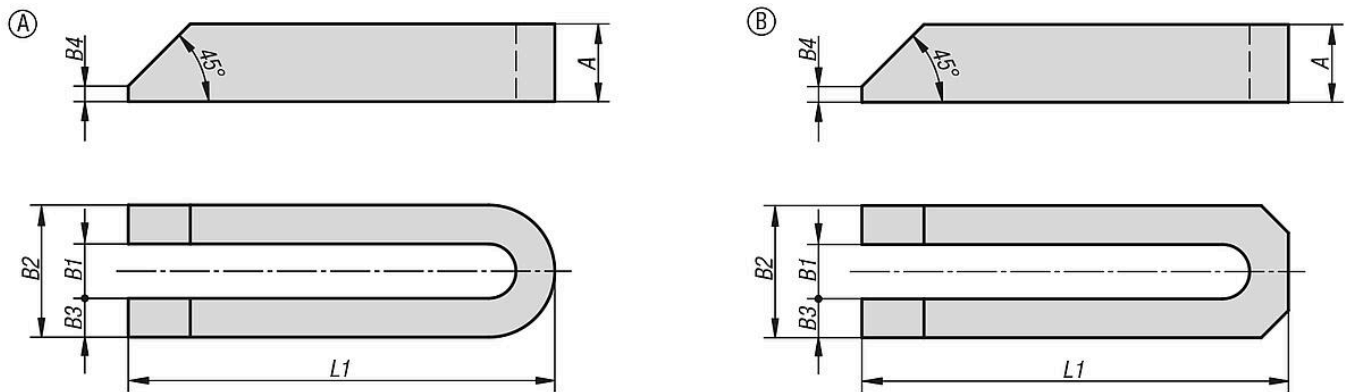
Steel painted.  
Aluminium bright.

**Note:**

When using spherical washers use the wide series K0729 Form G.



## Drawings



## Overview of items

### Clamp straps open U, DIN 6315, steel or aluminium

Order No.	Main material	Form	L1	A	B1	B2	B3	B4	for screw
K1952.06	QT steel	A	60	12	6,6	18	6	3	M6
K1952.08	QT steel	A	80	15	9	25	8	4	M8
K1952.10	QT steel	A	100	20	11	31	10	5	M10
K1952.12	QT steel	A	125	25	14	38	12	6	M12/M14
K1952.121	QT steel	A	160	25	14	38	12	6	M12/M14
K1952.122	QT steel	A	200	25	14	38	12	6	M12/M14
K1952.16	QT steel	A	160	30	18	48	15	8	M16/M18
K1952.161	QT steel	A	200	30	18	48	15	8	M16/M18
K1952.162	QT steel	A	250	40	18	48	15	10	M16/M18

## Clamp straps open U DIN 6315, steel or aluminium

### Overview of items

Order No.	Main material	Form	L1	A	B1	B2	B3	B4	for screw
K1952.20	QT steel	A	200	40	22	52	15	10	M20/M22
K1952.201	QT steel	A	250	40	22	62	20	10	M20/M22
K1952.202	QT steel	A	315	40	22	62	20	10	M20/M22
K1952.24	QT steel	A	200	40	26	66	20	10	M24
K1952.241	QT steel	A	250	40	26	66	20	10	M24
K1952.242	QT steel	A	315	40	26	66	20	10	M24
K1952.301	QT steel	A	250	50	33	73	20	12	M30/M32
K1952.30	QT steel	A	315	50	33	73	20	12	M30/M32
K1952.302	QT steel	A	400	50	33	73	20	12	M30/M32
K1952.40	QT steel	A	400	60	40	100	30	12	M36
K1952.401	QT steel	A	600	60	40	100	30	12	M36
K1952.206	aluminium	B	60	12	7	19	6	3	M6
K1952.208	aluminium	B	80	15	9	25	8	4	M8
K1952.210	aluminium	B	100	20	11	31	10	5	M10
K1952.212	aluminium	B	125	25	14	38	12	6	M12/M14
K1952.2121	aluminium	B	160	28	14	38	12	6	M12/M14
K1952.216	aluminium	B	160	30	18	48	15	8	M16/M18
K1952.2161	aluminium	B	200	36	18	48	15	8	M16/M18
K1952.220	aluminium	B	200	40	22	52	15	10	M20/M22
K1952.2201	aluminium	B	250	40	22	62	20	10	M20/M22
K1952.224	aluminium	B	200	40	26	66	20	10	M24
K1952.2241	aluminium	B	250	40	26	66	20	10	M24
K1952.230	aluminium	B	315	50	34	74	20	12	M30/M32