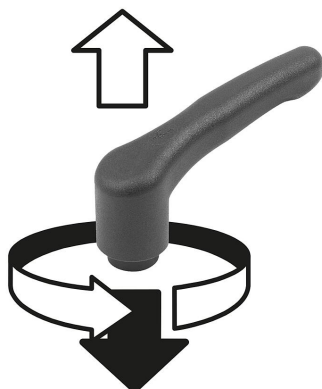


## Clamping levers ECO, plastic with internal thread, threaded insert brass or blue passivated steel

Item description/product images



press to  
disengage



### Description

#### Material:

Grip lever and insert made from reinforced thermoplastic.  
Bush brass or steel.

#### Version:

Brass bright.  
Steel trivalent blue-passivated.

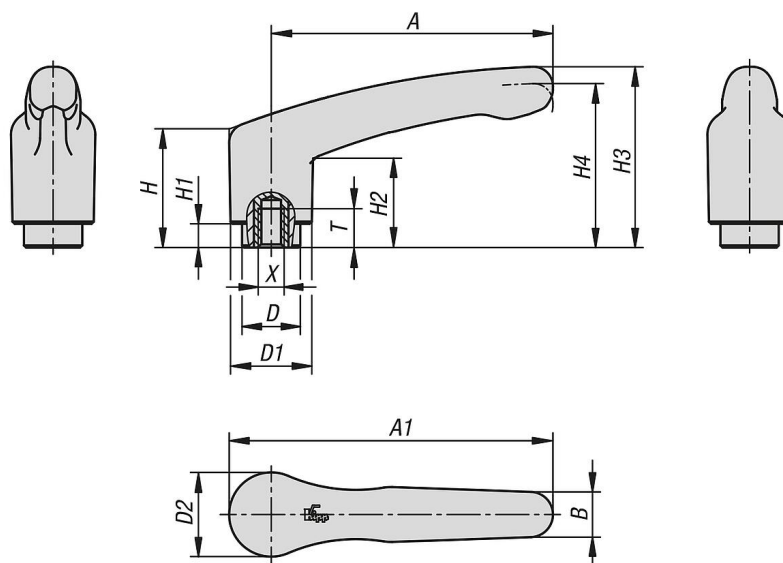
#### Type of operation:

When not actuated the handle is engaged, thus allowing the thread to be fastened or released. When pressed, the handle can be re-positioned and then re-engaged in the gear ring by spring force.

#### On request:

Special versions.

### Drawings



### Overview of items

#### Clamping levers ECO, plastic with female thread

## Clamping levers ECO, plastic with internal thread, threaded insert brass or blue passivated steel

### Overview of items

Order No.	Main colour	Component material	X	T	D	D1	D2	H	H1	H2	H3	H4	A	A1	B	No. of teeth
K1872.1041	black grey RAL 7021	brass	M4	6	10	13,2	13,8	22,7	5	15,2	31,8	28,9	39,9	46,8	7,9	12
K1872.1051	black grey RAL 7021	brass	M5	6	10	13,2	13,8	22,7	5	15,2	31,8	28,9	39,9	46,8	7,9	12
K1872.2051	black grey RAL 7021	brass	M5	8	13,5	18,8	19,5	27,4	5,5	20,7	41,9	38	65,2	75	10,5	12
K1872.2061	black grey RAL 7021	brass	M6	8	13,5	18,8	19,5	27,4	5,5	20,7	41,9	38	65,2	75	10,5	12
K1872.2081	black grey RAL 7021	brass	M8	9	13,5	18,8	19,5	27,4	5,5	20,7	41,9	38	65,2	75	10,5	12
K1872.3081	black grey RAL 7021	steel	M8	12	17	21,2	22,2	40	10	31,4	58,1	53,3	80,3	91,3	11,7	12
K1872.3101	black grey RAL 7021	steel	M10	12	17	21,2	22,2	40	10	31,4	58,1	53,3	80,3	91,3	11,7	12
K1872.10484	traffic red RAL 3020	brass	M4	6	10	13,2	13,8	22,7	5	15,2	31,8	28,9	39,9	46,8	7,9	12
K1872.10584	traffic red RAL 3020	brass	M5	6	10	13,2	13,8	22,7	5	15,2	31,8	28,9	39,9	46,8	7,9	12
K1872.20584	traffic red RAL 3020	brass	M5	8	13,5	18,8	19,5	27,4	5,5	20,7	41,9	38	65,2	75	10,5	12
K1872.20684	traffic red RAL 3020	brass	M6	8	13,5	18,8	19,5	27,4	5,5	20,7	41,9	38	65,2	75	10,5	12
K1872.20884	traffic red RAL 3020	brass	M8	9	13,5	18,8	19,5	27,4	5,5	20,7	41,9	38	65,2	75	10,5	12
K1872.30884	traffic red RAL 3020	steel	M8	12	17	21,2	22,2	40	10	31,4	58,1	53,3	80,3	91,3	11,7	12
K1872.31084	traffic red RAL 3020	steel	M10	12	17	21,2	22,2	40	10	31,4	58,1	53,3	80,3	91,3	11,7	12