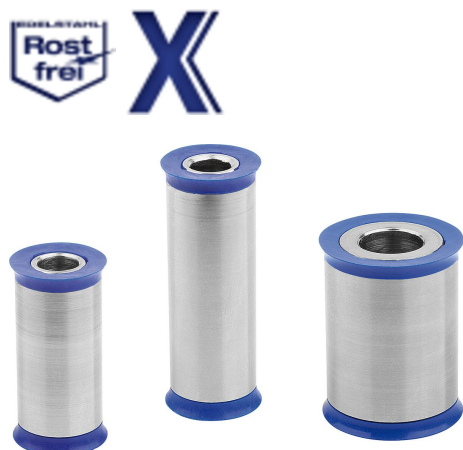


## Spacer sleeves, stainless steel with seal washer in Hygienic DESIGN

### Item description/product images



### Description

#### Product description:

The Hygienic DESIGN spacer sleeve was specially developed for use in food-processing facilities. Special emphasis has been placed on the cleaning-optimised geometry and a surface finish of  $Ra \leq 0.8 \mu\text{m}$ . The sealing washer made from foodstuff conform plastic is exchangeable.

#### Material:

Spacer sleeve stainless steel 1.4404.

Sealing washer: EU10/2011 and FDA conform thermoplastic (POM).

#### Version:

Spacer sleeve: unpolished stainless steel.

Sealing washer: RAL5002 - Ultramarine blue (POM).

#### Note:

The contact face for the sealing washer must ideally be flat and perpendicular to the threaded hole and have a surface finish of  $Ra \leq 0.8 \mu\text{m}$ .

Sealing washer is unsuitable for acidic cleaning ( $\text{pH} < 4$ ) and oxidising agents.

The suitability of the Hygienic DESIGN spacer sleeves for the respective application must be checked by the user. Depending on the loads and external influences (temperature, cleaning media, product media), the sealing washer should be inspected regularly and replaced if necessary.

#### Temperature range:

-20 °C to +100 °C (POM).

#### Advantages:

Exchangeable seal washer.

Foodstuff conform material.

Cleaning optimised geometry.

#### Supplied with:

Spacer sleeves incl. sealing washer.

#### Accessory:

Sealing washer K1649.

Stainless steel hex head bolt with sealing washer K1647.

Stainless steel hex nut with sealing washer K1648.

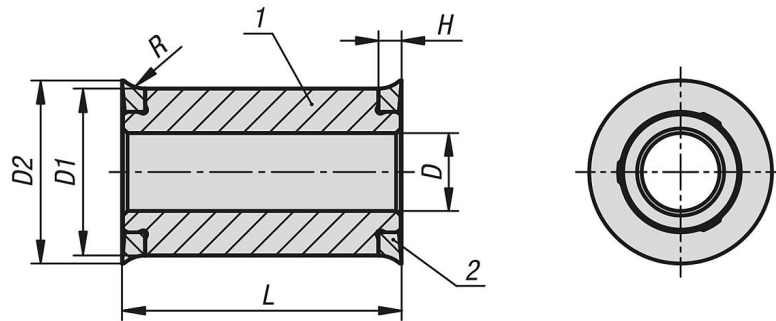
#### Drawing reference:

1) Spacer sleeve

2) Sealing washer

## Spacer sleeves, stainless steel with seal washer in Hygienic DESIGN

### Drawings



### Overview of items

#### Spacer sleeves, stainless steel with sealing washer in Hygienic DESIGN

Order No.	L	D	D1	D2	H	R
K1822.11106X30	30	6,4	14	15,74	2,5	3,5
K1822.11106X40	40	6,4	14	15,74	2,5	3,5
K1822.11106X50	50	6,4	14	15,74	2,5	3,5
K1822.11108X30	30	8,4	18	19,74	2,5	3,5
K1822.11108X40	40	8,4	18	19,74	2,5	3,5
K1822.11108X50	50	8,4	18	19,74	2,5	3,5
K1822.11110X30	30	10,5	22	23,74	2,5	3,5
K1822.11110X40	40	10,5	22	23,74	2,5	3,5
K1822.11110X50	50	10,5	22	23,74	2,5	3,5
K1822.11112X30	30	13	26	28,25	3	4
K1822.11112X40	40	13	26	28,25	3	4
K1822.11112X50	50	13	26	28,25	3	4