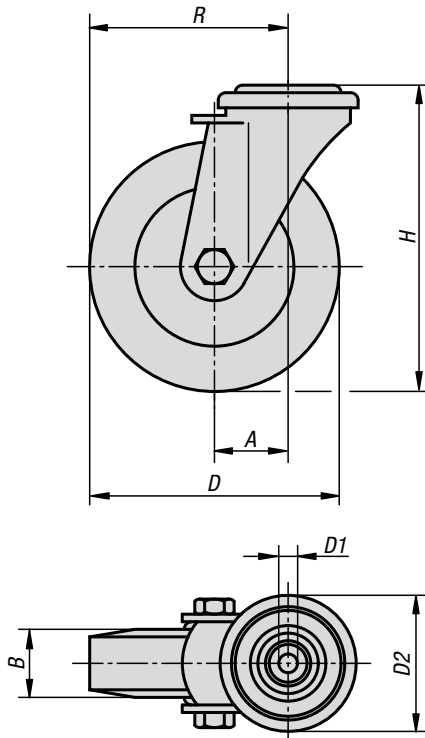


## Swivel castors with bolt hole

stainless steel, for sterile areas



swivel castor



**Material:**

Housing stainless steel 1.4301.  
Wheel rim, high-quality thermoplastic polyurethane.  
Wheel tread, high-quality polyamide.

**Version:**

Housing press formed.  
Double ball bearing in the castor head.  
Plain bearing in wheels.

**Sample order:**

K1791.21125040

**Note:**

Wheel axle bolted.

**Application:**

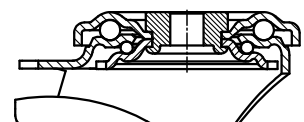
Loads can be transported with low noise and maximum ease in area's with high hygiene requirements.

**Temperature range:**

-20°C to +70°C.



swivel head bearing:



### KIPP Swivel castors with bolt hole stainless steel, for sterile areas

Order No. Swivel castor without locking system	Order No. Swivel castor with stop-fix locking system	Wheel bearing	A	B	D	D1	D2	H	R	Permissible load kg
K1791.21100035	K1791.211000352	plain bearing	36/36	35	100	13	70	125	86/86	150
K1791.21125040	K1791.211250402	plain bearing	40/40	40	125	13	70	150	102,5/102,5	150
K1791.21160045	K1791.211600452	plain bearing	54/54	45	160	13	88	195	134/134	300
K1791.21200050	K1791.212000502	plain bearing	54/54	50	200	13	88	235	154/154	300