

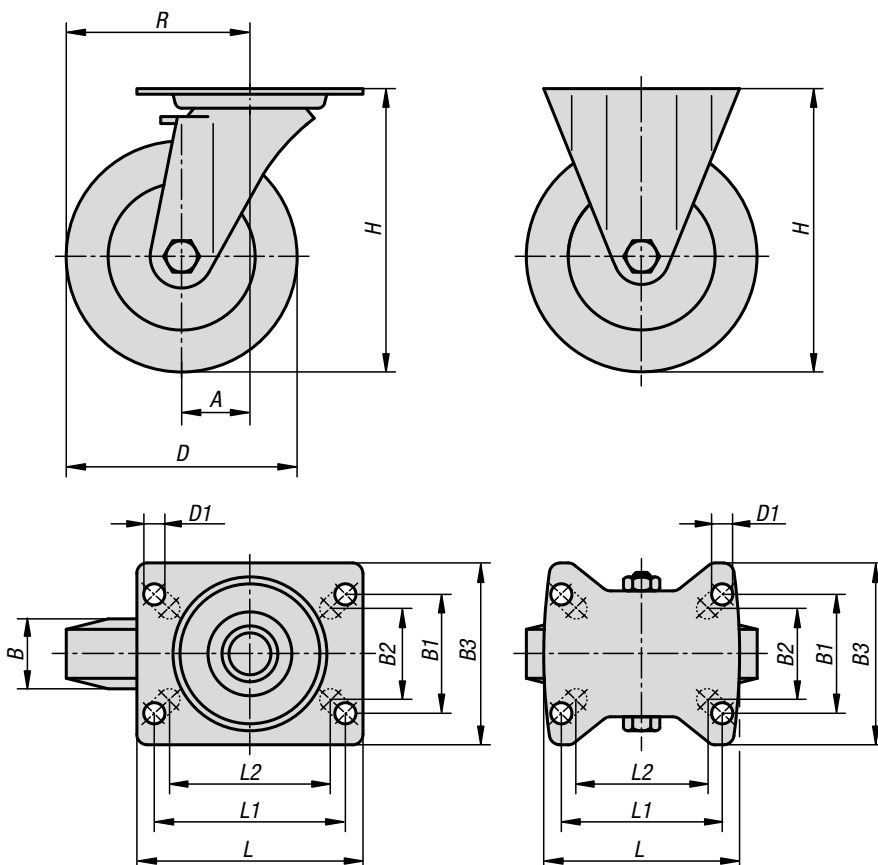
Swivel and fixed castors

stainless steel, for sterile areas



swivel castor

fixed castor



Material:

Housing stainless steel 1.4301.
Wheel rim, high-quality thermoplastic polyurethane.
Wheel tread, high-quality polyamide.

Version:

Housing press formed.
Double ball bearing in the castor head.
Plain bearing in wheels.

Sample order:

K1790.111250401

Note:

Wheel axle bolted.
Swivel and fixed castors with mounting plate.

Application:

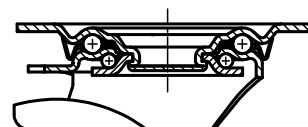
Loads can be transported with low noise and maximum ease in area's with high hygiene requirements.

Temperature range:

-20°C to +70°C.



swivel head bearing:



KIPP Swivel and fixed castors stainless steel, for sterile areas

Order No. Fixed castor without locking system	Order No. Swivel castor without locking system	Order No. Swivel castor with stop-fix locking system	Wheel bearing	A	B	B1	B2	B3	D	D1
K1790.211000351	K1790.21100035	K1790.211000352	plain bearing	-/30/30	35	60	55	85	100	9
K1790.211250401	K1790.21125040	K1790.211250402	plain bearing	-/40/40	40	60	55	85	125	9
K1790.211600451	K1790.21160045	K1790.211600452	plain bearing	-/60/60	45	80	75	110	160	11
K1790.212000501	K1790.21200050	K1790.212000502	plain bearing	-/65/65	50	80	75	110	200	11

Order No. Fixed castor without locking system	Order No. Swivel castor without locking system	Order No. Swivel castor with stop-fix locking system	Wheel bearing	H	L	L1	L2	R	Permissible load kg
K1790.211000351	K1790.21100035	K1790.211000352	plain bearing	125	100	80	76	-/80/80	200
K1790.211250401	K1790.21125040	K1790.211250402	plain bearing	150	100	80	76	-/102,5/102,5	250
K1790.211600451	K1790.21160045	K1790.211600452	plain bearing	195	140	105	-	-/140/140	400
K1790.212000501	K1790.21200050	K1790.212000502	plain bearing	235	140	105	-	-/165/165	400