

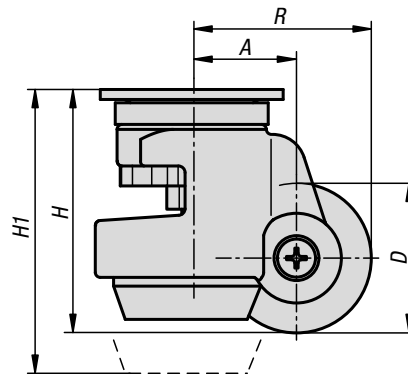
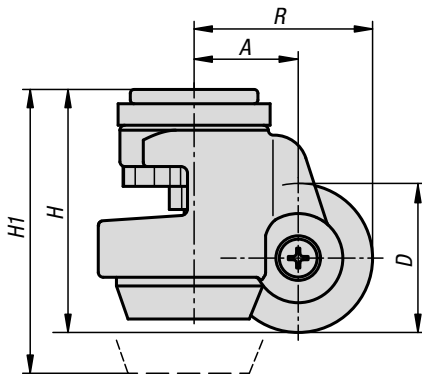
Elevating castors with foot

with bolt hole or mounting plate



bolt hole

mounting plate



Material:

Housing die-cast aluminium.
Roller break resistant polyamide 6, Shore 70D.
Foot hard rubber.

Version:

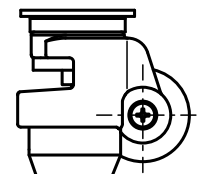
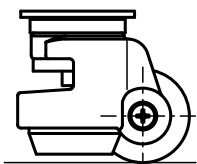
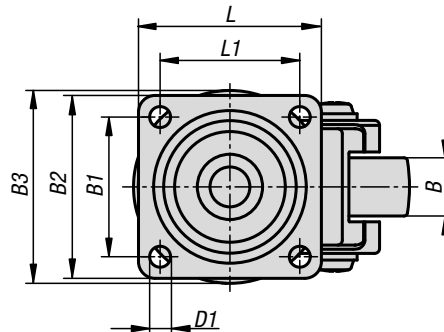
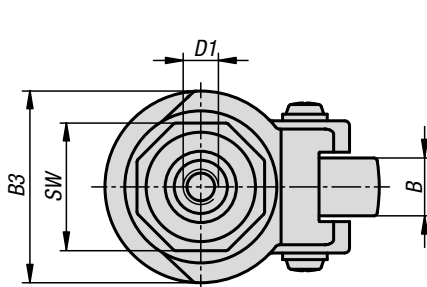
Housing, powder-coated, ivory.
Steel parts trivalent blue passivated.
Roller and foot black.

Sample order:

K1786.045180

Note:

Elevating castor with foot. With sealed ball bearing in the swivel head. Height adjustment with a 13 mm spanner or by the integrated adjustment screw. Wheel axle bolted.



KIPP Elevating castors with foot with bolt hole or mounting plate

Order No.	Version 1	Wheel bearing	D	D1	A	B	B1	B3	H	H1	L	L1	R	SW	Permissible load kg
K1786.045180	with locking system	plain bearing	45	M8x12	32	18	-	58	72	82	-	-	54,5	40	180
K1786.050220	with locking system	plain bearing	50	M12x15	38	22	-	72	84	94	-	-	63	46	250
K1786.063290	with locking system	plain bearing	63	M12x15	46	29	-	85	104	119	-	-	77,5	65	500
K1786.045181	with locking system	plain bearing	45	7	32	18	42	58	72	82	55	42	54,5	-	180
K1786.050221	with locking system	plain bearing	50	7	38	22	58	72	84	94	73	58	63	-	250
K1786.063291	with locking system	plain bearing	63	9	46	29	70	85	104	119	90	70	77,5	-	500

