

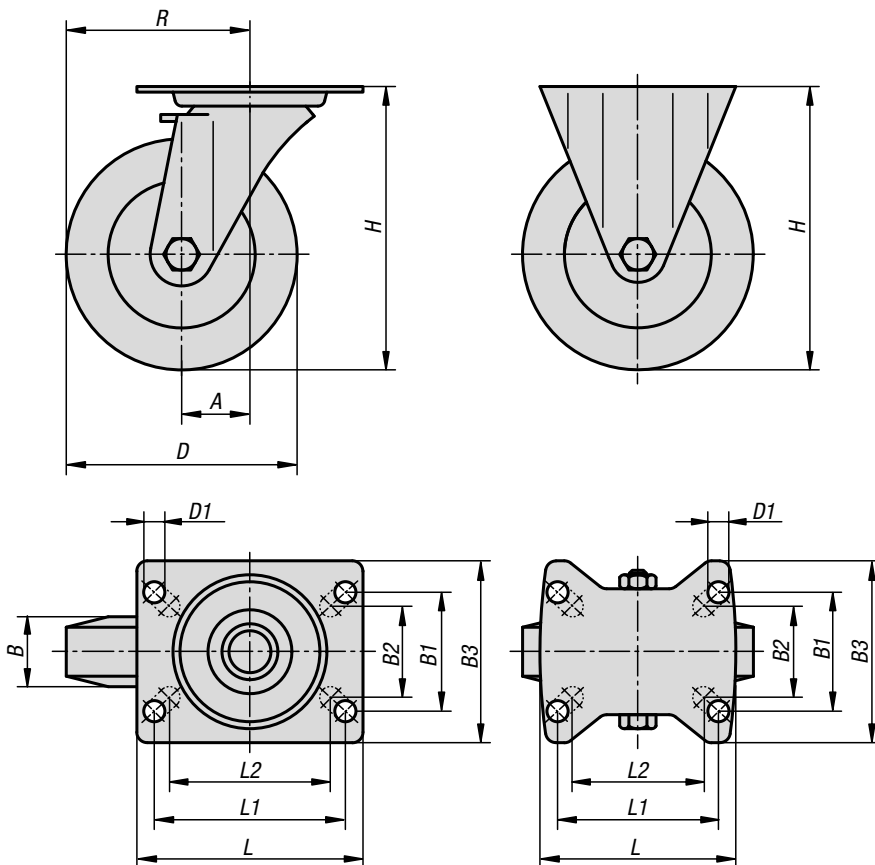
Swivel and fixed castors

stainless steel, standard version



swivel castor

fixed castor



Material:

Housing stainless steel 1.4301.
Wheels high-quality unbreakable polyamide.

Version:

Housing press formed.
Double ball bearing in the castor head.
Plain bearing in wheels.

Sample order:

K1773.211000371

Note:

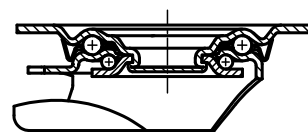
Wheel axle bolted.
Swivel and fixed castors with mounting plate.
Vibratory ground surface.
Stainless.

Temperature range:

-25 °C to +80 °C.



swivel head bearing:



KIPP Swivel and fixed castors stainless steel, standard version

Order No. Fixed castor without locking system	Order No. Swivel castor without locking system	Order No. Swivel castor with stop-fix locking system	Wheel bearing	A	B	B1	B2	B3	D	D1
K1773.210750321	K1773.21075032	K1773.210750322	plain bearing	-/38/38	32	60	55	85	75	9
K1773.211000371	K1773.21100037	K1773.211000372	plain bearing	-/36/36	37	60	55	85	100	9
K1773.211250401	K1773.21125040	K1773.211250402	plain bearing	-/40/40	40	60	55	85	125	9
K1773.211500501	K1773.21150050	K1773.211500502	plain bearing	-/54/54	50	80	75	110	150	11

Order No. Fixed castor without locking system	Order No. Swivel castor without locking system	Order No. Swivel castor with stop-fix locking system	Wheel bearing	H	L	L1	L2	R	Permissible load kg
K1773.210750321	K1773.21075032	K1773.210750322	plain bearing	100	100	80	76	-/75,5/75,5	150
K1773.211000371	K1773.21100037	K1773.211000372	plain bearing	125	100	80	76	-/86/86	150
K1773.211250401	K1773.21125040	K1773.211250402	plain bearing	150	100	80	76	-/102,5/102,5	150
K1773.211500501	K1773.21150050	K1773.211500502	plain bearing	190	140	105	-	-/129/129	300