

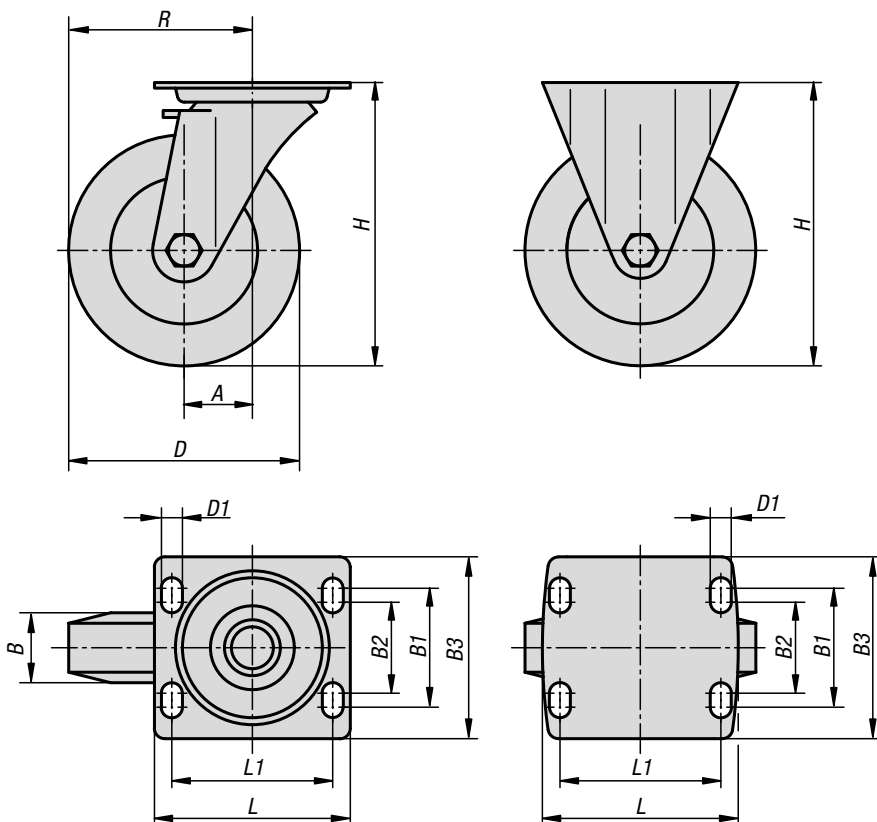
Swivel and fixed castors

welded steel heavy-duty version



swivel castor

fixed castor



Material:

Housing solid welded steel construction. Wheels with welded steel body and Extrathane® tread.

Version:

The housing is a rugged welded steel construction. Swivel castor housing with DIN 711 axial groove ball bearing and DIN 720 tapered roller bearing in the swivel head. Dust and splash-proof, with grease nipple. Precision ball bearings in the wheels.

Sample order:

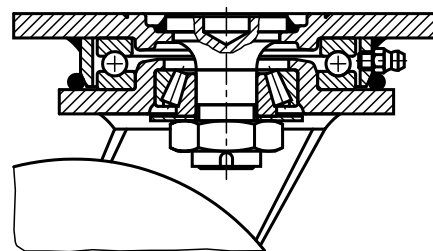
K1769.20050

Note:

Centre pin welded in, bolted and secured. Wheel axle bolted.



swivel head bearing



KIPP Swivel and fixed castors welded steel heavy-duty version

Order No. Fixed castor without locking system	Order No. Swivel castor without locking system	Order No. Swivel castor with stop-top locking system	Wheel bearing	A	B	B1	B2	B3	D	D1
K1769.160501	K1769.16050	K1769.160502	ball bearing	-/55/55	50	80	75	110	160	11
K1769.200501	K1769.20050	K1769.200502	ball bearing	-/60/60	50	80	75	110	200	11
K1769.250601	K1769.25060	K1769.250602	ball bearing	-/75/75	60	105	-	140	250	14

Order No. Fixed castor without locking system	Order No. Swivel castor without locking system	Order No. Swivel castor with stop-top locking system	Wheel bearing	H	L	L1	R	Permissible load kg
K1769.160501	K1769.16050	K1769.160502	ball bearing	205	140	105	-/135/135	700
K1769.200501	K1769.20050	K1769.200502	ball bearing	245	140	105	-/160/160	1000
K1769.250601	K1769.25060	K1769.250602	ball bearing	305	175	140	-/200/200	1350