

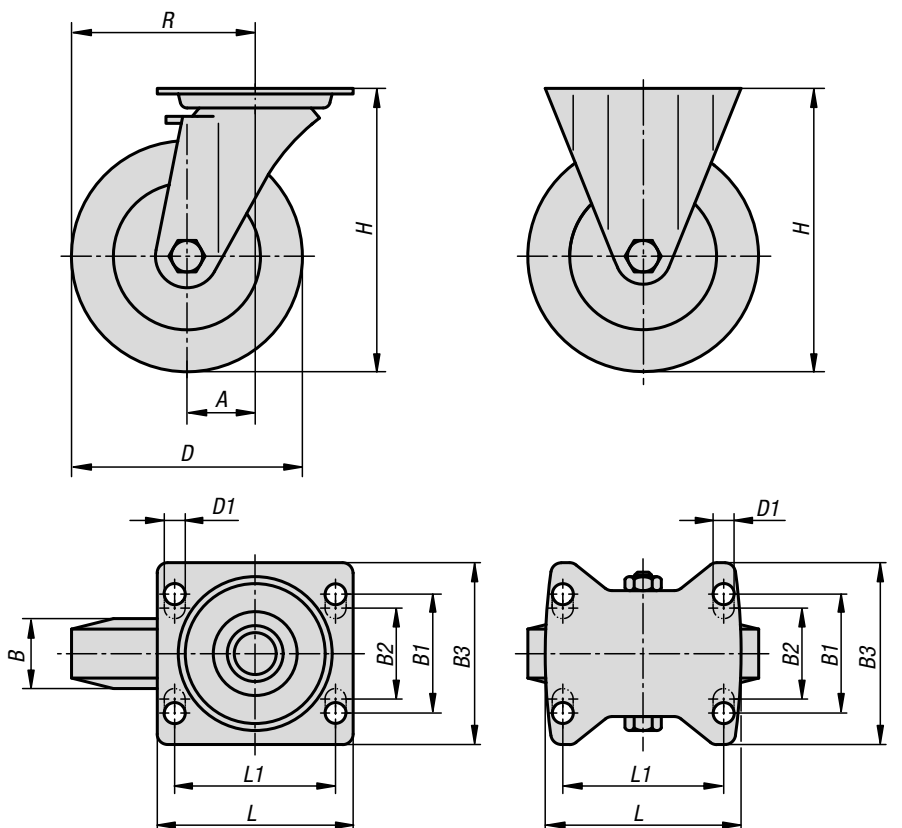
## Swivel and fixed castors

medium-duty version



swivel castor

fixed castor



**Material:**

Housing steel plate.  
Wheel body die-cast aluminium with Extrathane® tread.

**Version:**

Housing press formed.  
Double ball bearing with ball shield in the castor head.  
Precision ball bearings in the wheels.

**Sample order:**

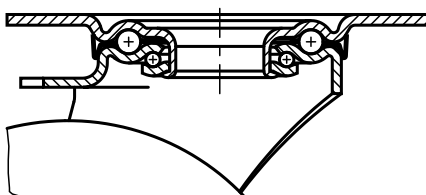
K1767.12540

**Note:**

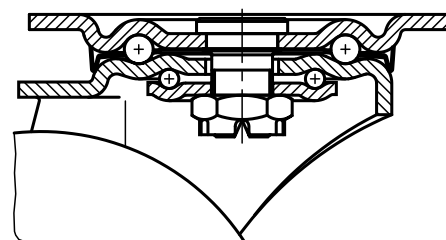
The wheels are non-corroding and have a low rolling resistance. Wheel axle bolted.



swivel head bearing  $R1 \leq 125$



swivel head bearing  $R1 \geq 160$



### KIPP Swivel and fixed castors medium-duty version

Order No. Fixed castor without locking system	Order No. Swivel castor without locking system	Order No. Swivel castor with stop-top locking system	Wheel bearing	A	B	B1	B2	B3	D	D1
K1767.100401	K1767.10040	K1767.100402	ball bearing	-/45/45	40	60	-	85	100	9
K1767.125401	K1767.12540	K1767.125402	ball bearing	-/48/48	40	60	-	85	125	9
K1767.160501	K1767.16050	K1767.160502	ball bearing	-/63/63	50	80	75	110	160	11
K1767.200501	K1767.20050	K1767.200502	ball bearing	-/70/70	50	80	75	110	200	11

Order No. Fixed castor without locking system	Order No. Swivel castor without locking system	Order No. Swivel castor with stop-top locking system	Wheel bearing	H	L	L1	R	Permissible load kg
K1767.100401	K1767.10040	K1767.100402	ball bearing	130	100	80	-/95/95	250
K1767.125401	K1767.12540	K1767.125402	ball bearing	155	100	80	-/110,5/110,5	250
K1767.160501	K1767.16050	K1767.160502	ball bearing	202	140	105	-/143/143	550
K1767.200501	K1767.20050	K1767.200502	ball bearing	245	140	105	-/170/170	800