

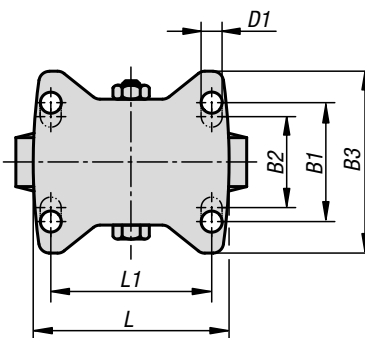
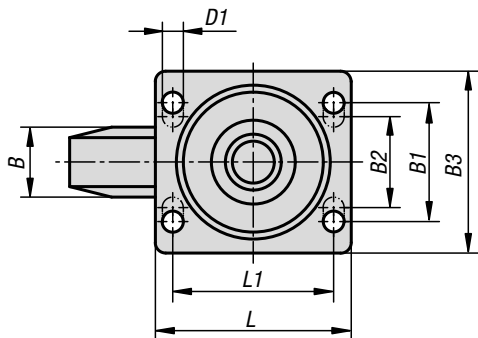
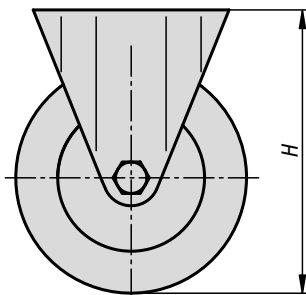
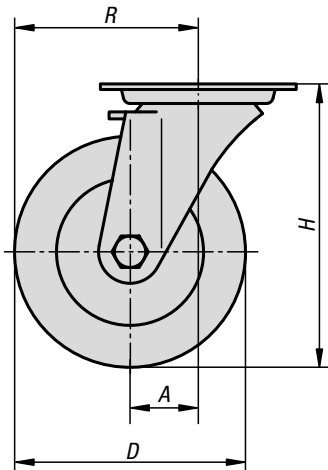
Swivel and fixed castors

standard version



swivel castor

fixed castor



Material:

Housing steel plate.

Wheel body PA 6 with abrasion-resistant polyurethane tread.

Version:

Housing press formed.

Double ball bearing with ball shield in the castor head.
Plain bearing in the wheels.

Sample order:

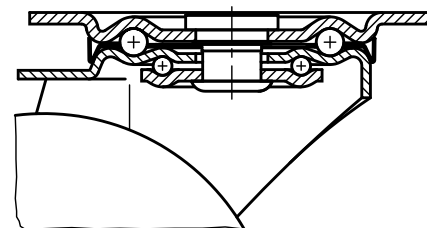
K1764.12535

Note:

The wheels are unbreakable, maintenance-free and non-corroding. Wheel axle bolted. Tread non-marking.



swivel head bearing



KIPP Swivel and fixed castors standard version

Order No. Fixed castor without locking system	Order No. Swivel castor without locking system	Order No. Swivel castor with stop-fix locking system	Wheel bearing	A	B	B1	B2	B3	D	D1
K1764.100351	K1764.10035	K1764.100352	plain bearing	-/36/36	35	60	-	85	100	9
K1764.125351	K1764.12535	K1764.125352	plain bearing	-/40/40	40	60	-	85	125	9
K1764.150401	K1764.15040	K1764.150402	plain bearing	-/60/60	45	80	75	110	150	11
K1764.200501	K1764.20050	K1764.200502	plain bearing	-/65/65	50	80	75	110	200	11

Order No. Fixed castor without locking system	Order No. Swivel castor without locking system	Order No. Swivel castor with stop-fix locking system	Wheel bearing	H	L	L1	R	Permissible load kg
K1764.100351	K1764.10035	K1764.100352	plain bearing	125	100	80	-/86/86	200
K1764.125351	K1764.12535	K1764.125352	plain bearing	150	100	80	-/102,5/102,5	200
K1764.150401	K1764.15040	K1764.150402	plain bearing	190	140	105	-/135/135	400
K1764.200501	K1764.20050	K1764.200502	plain bearing	235	140	105	-/165/165	400