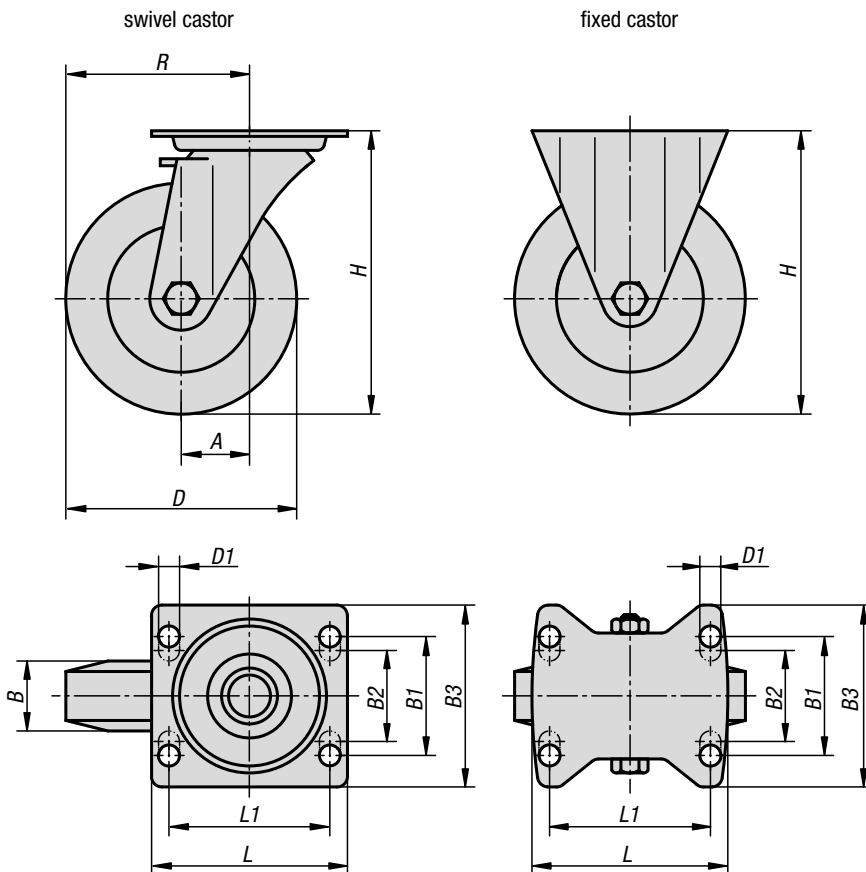


## Swivel and fixed castors

heavy-duty version

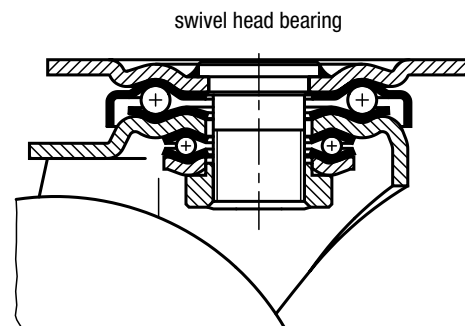


**Material:**  
Housing thick steel plate.  
Tyres steel-wire reinforced elastic solid rubber.  
Wheel body welded steel.

**Version:**  
Housing press formed.  
Reinforced fork, base plate and centre pin.  
Double ball bearing with hardened shells in the castor head.  
Precision ball bearings in the wheels.

**Sample order:**  
K1763.12550

**Note:**  
These castors are particularly impact and shock proof and assure a high service life.  
Wheel axle bolted.



### KIPP Swivel and fixed castors heavy-duty version

Order No. Fixed castor without locking system	Order No. Swivel castor without locking system	Order No. Swivel castor with stop-top locking system	Wheel bearing	A	B	B1	B2	B3	D	D1
K1763.100401	K1763.10040	K1763.100402	ball bearing	-/45/45	40	60	-	85	100	9
K1763.125501	K1763.12550	K1763.125502	ball bearing	-/55/55	50	80	75	110	125	11
K1763.160501	K1763.16050	K1763.160502	ball bearing	-/65/65	50	80	75	110	160	11
K1763.200501	K1763.20050	K1763.200502	ball bearing	-/70/70	50	80	75	110	200	11
K1763.250601	K1763.25060	K1763.250602	ball bearing	-/82/82	60	80	75	110	250	11

Order No. Fixed castor without locking system	Order No. Swivel castor without locking system	Order No. Swivel castor with stop-top locking system	Wheel bearing	H	L	L1	R	Permissible load kg
K1763.100401	K1763.10040	K1763.100402	ball bearing	140	100	80	-/95/95	180
K1763.125501	K1763.12550	K1763.125502	ball bearing	170	140	105	-/117,5/117,5	280
K1763.160501	K1763.16050	K1763.160502	ball bearing	202	140	105	-/145/145	400
K1763.200501	K1763.20050	K1763.200502	ball bearing	245	140	105	-/170/170	500
K1763.250601	K1763.25060	K1763.250602	ball bearing	295	140	105	-/207/207	700