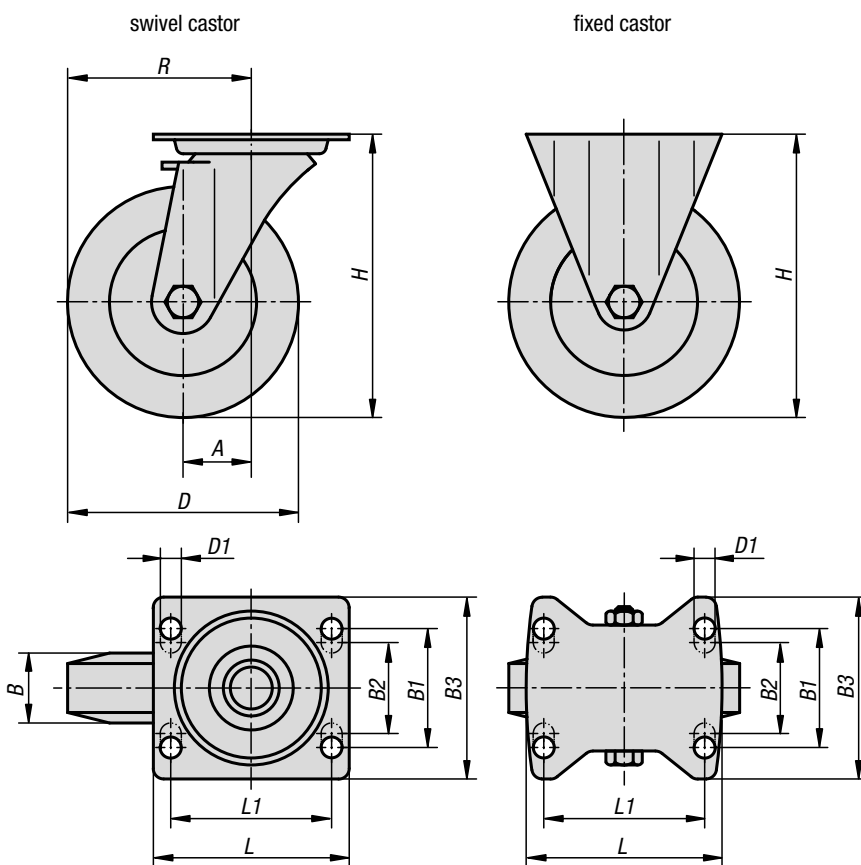


Swivel and fixed castors

standard version



Material:

Housing steel plate.
Wheel body PA 6 with vulcanised elastic solid rubber tyre.

Version:

Housing press formed.
Double ball bearing with ball shield in castor head.
Roller bearings in the wheels.

Sample order:

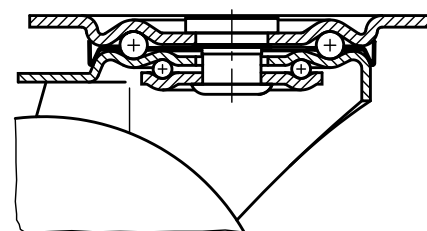
K1762.12537

Note:

Wheel axle bolted.
Wheels are shock and impact proof.



swivel head bearing



KIPP Swivel and fixed castors standard version

Order No. Fixed castor without locking system	Order No. Swivel castor without locking system	Order No. Swivel castor with stop-fix locking system	Wheel bearing	A	B	B1	B2	B3	D	D1
K1762.100371	K1762.10037	K1762.100372	roller bearing	-/36/36	32	-	60	85	100	9
K1762.125371	K1762.12537	K1762.125372	roller bearing	-/40/40	37	-	60	85	125	9
K1762.160501	K1762.16050	K1762.160502	roller bearing	-/60/60	50	75	80	110	160	11
K1762.200501	K1762.20050	K1762.200502	roller bearing	-/65/65	50	75	80	110	200	11

Order No. Fixed castor without locking system	Order No. Swivel castor without locking system	Order No. Swivel castor with stop-fix locking system	Wheel bearing	H	L	L1	R	Permissible load kg
K1762.100371	K1762.10037	K1762.100372	roller bearing	125	100	80	-/86/86	170
K1762.125371	K1762.12537	K1762.125372	roller bearing	150	100	80	-/102,5/102,5	200
K1762.160501	K1762.16050	K1762.160502	roller bearing	195	140	105	-/140/140	350
K1762.200501	K1762.20050	K1762.200502	roller bearing	235	140	105	-/165/165	400