

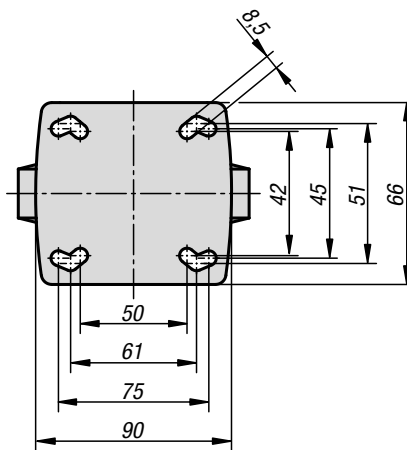
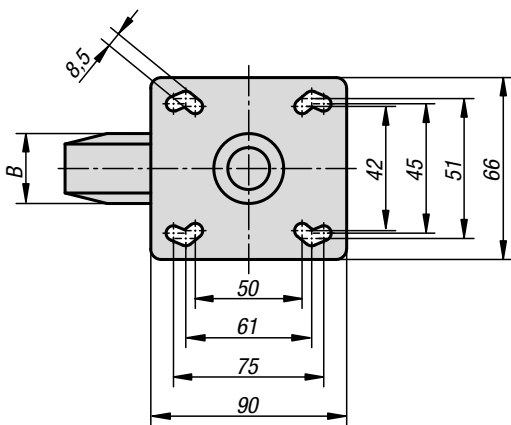
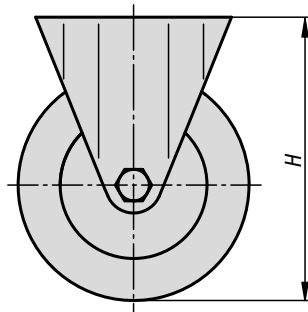
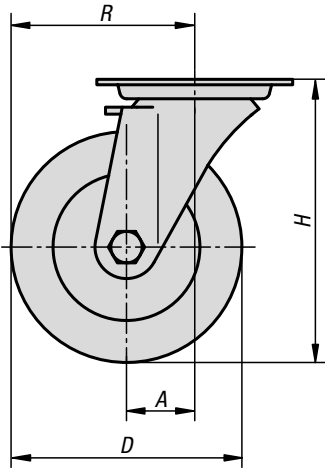
Swivel and fixed castors

heavy-duty version



swivel castor

fixed castor



Material:

Housing steel plate.
Wheel treads solid rubber.
Wheel rims polyamide.

Version:

Housing press formed.
Double ball bearing in the castor head.
Plain bearing in wheels.

Sample order:

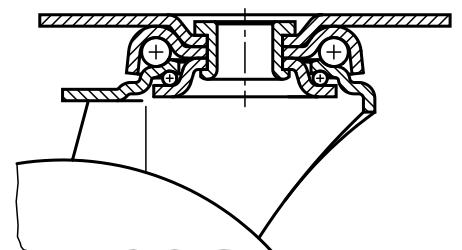
K1760.10032

Note:

Wheel axle bolted.
Solid rubber tyres are shock and impact proof and non-corroding.



swivel head bearing



KIPP Swivel and fixed castors heavy-duty version

Order No. Fixed castor without locking system	Order No. Swivel castor without locking system	Order No. Swivel castor with stop-fix locking system	Wheel bearing	A	B	D	H	R	Permissible load kg
K1760.080251	K1760.08025	K1760.080252	plain bearing	-/40/40	25	80	111	-/80/80	60
K1760.100321	K1760.10032	K1760.100322	plain bearing	-/40/40	32	100	136	-/90/90	90
K1760.125251	K1760.12525	K1760.125252	plain bearing	-/40/40	25	125	161	-/102,5/102,5	80
K1760.125321	K1760.12532	K1760.125322	plain bearing	-/40/40	32	125	161	-/102,5/102,5	100

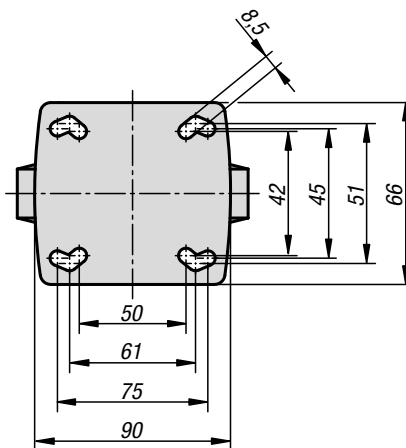
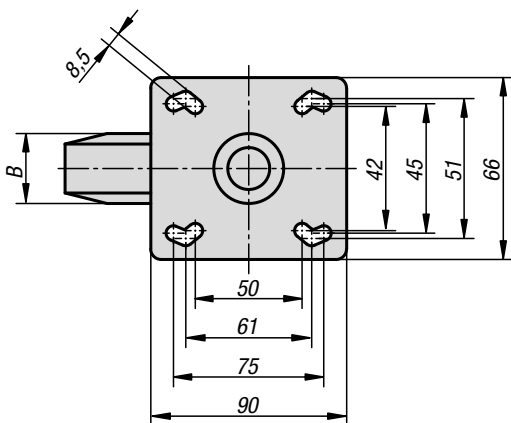
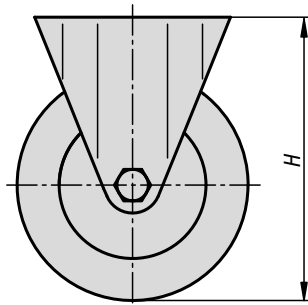
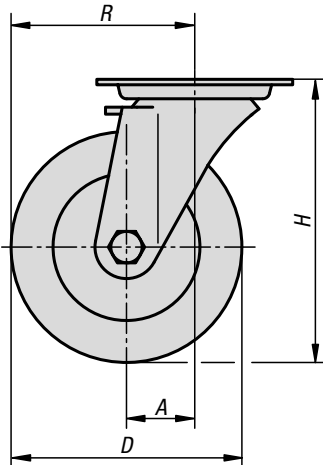
Swivel and fixed castors

steel plate, electrically conductive, heavy-duty version



swivel castor

fixed castor



Material:

Housing steel plate.
Wheels with thermoplastic rubber tread.
Wheel body polypropylene.

Version:

Housing press formed.
Double ball bearing in the castor head.
Plain bearing in wheels.

Sample order:

K1760.1108032

Note:

Wheel axle threaded. Swivel and fixed castors with mounting plate. Electrically conductive wheels, non-marking grey. The ohmic resistance of the wheel is less than $10^4 \Omega$.

Application:

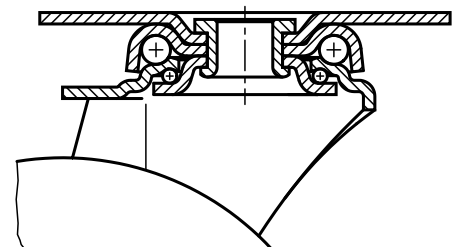
Electrically conductive wheels on swivel and fixed castors are used to protect against electrostatic discharge generated by transport equipment or the transported goods. Damage to sensitive goods and painful electrostatic shocks to the personal is so prevented.

Temperature range:

-20 °C to +60 °C.



swivel head bearing



KIPP Swivel and fixed castors steel plate, electrically conductive, heavy-duty version

Order No. Fixed castor without locking system	Order No. Swivel castor without locking system	Order No. Swivel castor with stop-fix locking system	Wheel bearing	A	B	D	H	R	Permissible load kg
K1760.11080321	K1760.1108032	K1760.11080322	plain bearing	-/40/40	32	80	111	-/80/80	65
K1760.11100321	K1760.1110032	K1760.11100322	plain bearing	-/40/40	32	100	136	-/90/90	70
K1760.11125321	K1760.1112532	K1760.11125322	plain bearing	-/40/40	32	125	161	-/102,5/102,5	80