

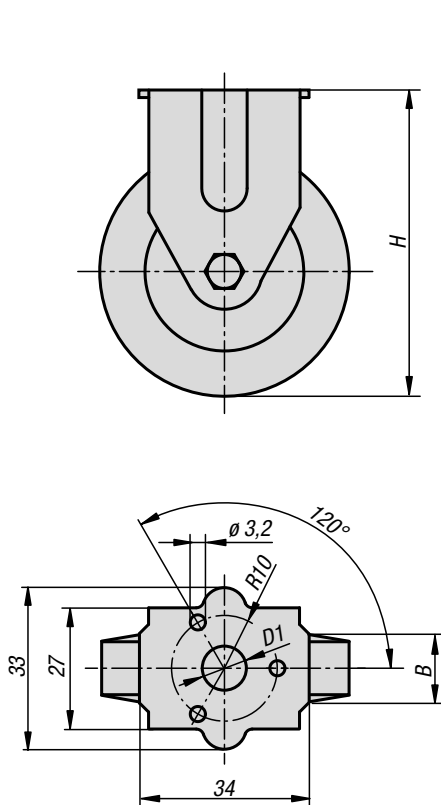
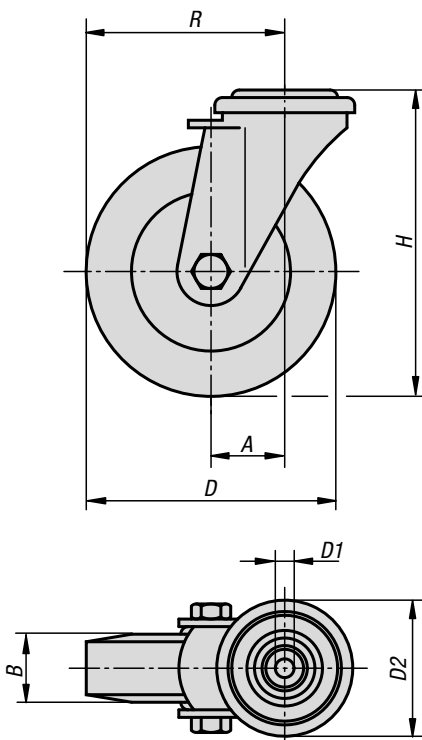
Swivel and fixed castors

standard version



swivel castor

fixed castor



Material:

Housing steel plate.
Wheel treads solid rubber.
Wheel rims polyamide.

Version:

Housing press formed.
Double ball bearing in the castor head.
Plain bearing in wheels.

Sample order:

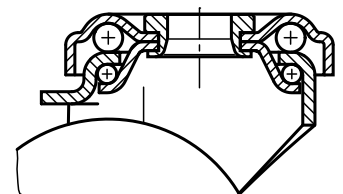
K1759.07525

Note:

Wheel axle bolted.
Swivel and fixed castors with bolt hole.
Wheels grey, non-marking.



swivel head bearing



KIPP Swivel and fixed castors standard version

Order No. Fixed castor without locking system	Order No. Swivel castor without locking system	Order No. Swivel castor with stop-fix locking system	Wheel bearing	A	B	D	D1	D2	H	R	Permissible load kg
K1759.050181	K1759.05018	K1759.050182	plain bearing	-/25/25	18	50	11	-/43/43	69	-/50/50	40
K1759.075251	K1759.07525	K1759.075252	plain bearing	-/28/28	25	75	11	-/43/43	98	-/65,5/65,5	60
-	K1759.10025	K1759.100252	plain bearing	33/33	25	100	11	43/43	121	83/83	70

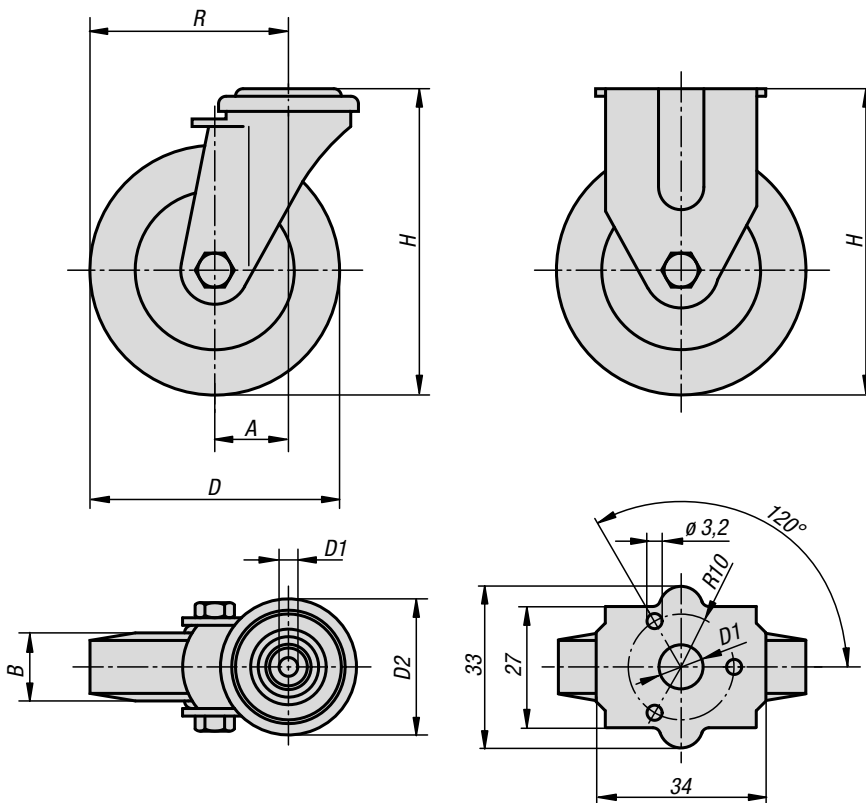
Swivel and fixed castors

electrically conductive, standard version



swivel castor

fixed castor



Material:

Housing steel plate.
Wheels with thermoplastic rubber tread.
Wheel body polypropylene.

Version:

Housing press formed.
Double ball bearing in the castor head.
Plain bearing in wheels.

Sample order:

K1759.1105019

Note:

Wheel axle threaded. Swivel and fixed castors with bolt hole. Electrically conductive wheels, non-marking grey. The ohmic resistance of the wheel is less than $10^4 \Omega$.

Application:

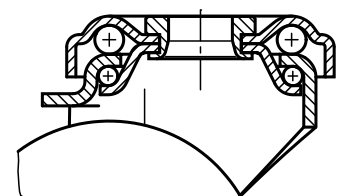
Electrically conductive wheels on swivel and fixed castors are used to protect against electrostatic discharge generated by transport equipment or the transported goods. Damage to sensitive goods and painful electrostatic shocks to the personal is so prevented.

Temperature range:

-20 °C to +60 °C.



swivel head bearing



KIPP Swivel and fixed castors standard version Swivel and fixed castors electrically conductive, standard version

Order No. Fixed castor without locking system	Order No. Swivel castor without locking system	Order No. Swivel castor with stop-fix locking system	Wheel bearing	A	B	D	D1	D2	H	R	Permissible load kg
K1759.11050191	K1759.1105019	K1759.11050192	plain bearing	-/25/25	19	50	11	-/43/43	69	-/50/50	30
K1759.11075251	K1759.1107525	K1759.11075252	plain bearing	-/29/29	25	75	11	-/43/43	98	-/66,5/66,5	50
-	K1759.1110025	K1759.11100252	plain bearing	33/33	25	100	11	43/43	121	83/83	60