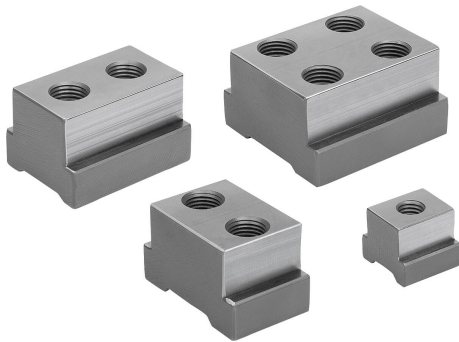


T-slot keys for wedge clamps

Item description/product images



Description

Material:
Carbon steel.

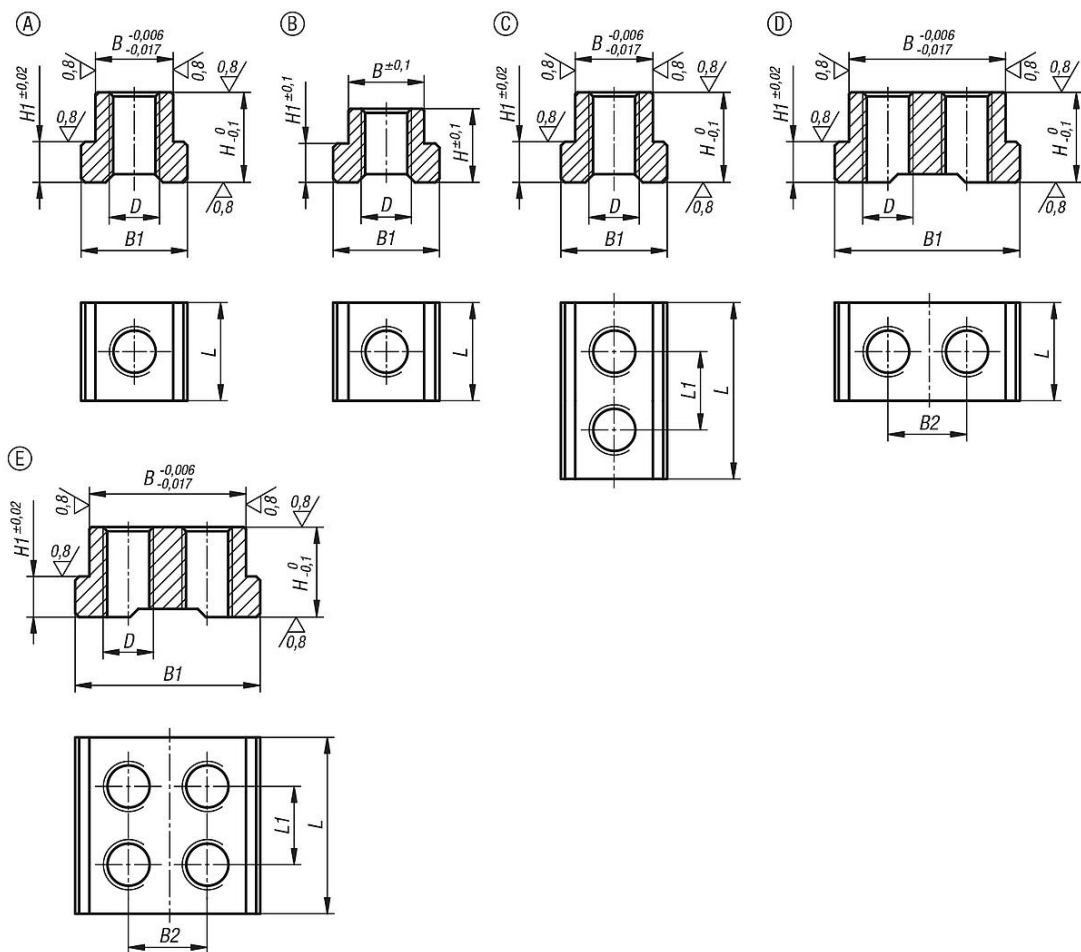
Version:
Tempered. Guide faces ground (HRC 38).

Note:
T-slot keys are matched to the multiple clamping system.
Form A/C are used for fixed stops.
Form B is for operating the clamping wedge of the clamping wedge segments.

Application:
The T-slot keys are inserted into the clamping rail at the appropriate position. The cap screw is used to screw the T-slot keys to the fixed stops and wedge clamps.

Advantages:
With Form A/C, the T-slot key has very little play in the clamping rail, so the fixed stops can also be inserted from the side.

Drawings



Overview of items

T-slot keys for wedge clamps

Overview of items

T-slot keys for wedge clamps

Order No.	suitable for system width	Form	Suitable for	L	L1	B	H	B1	H1	D Internal thread
K1758.05010241	50	A	fixed jaw single-sided	24	-	19	22	26	9,95	M10
K1758.05010361	50	C	fixed jaw double-sided	36	18	19	22	26	9,95	M10
K1758.05012241	50	A	wedge clamp with fixed jaw	24	-	19	22	26	9,95	M12
K1758.05012262	50	B	double-sided wedge clamp	26	-	18,5	18	26	9,5	M12
K1758.07214281	72	A	fixed jaw single-sided	28	-	30	33	40	14,95	M14x1,5
K1758.07214533	72	C	fixed jaw double-sided	53	28	30	33	40	14,95	M14x1,5
K1758.07216281	72	A	wedge clamp with fixed jaw	28	-	30	33	40	14,95	M16
K1758.07216302	72	B	double-sided wedge clamp	30	-	29,5	28,5	39,5	14,5	M16
K1758.10014344	100	D	Festbacke einseitig/Keilspannsegment m.Festbacke	34	-	45	33	56	14,95	M14x1,5
K1758.10014595	100	E	fixed jaw double-sided	59	30	45	33	56	14,95	M14x1,5
K1758.10016342	100	A	double-sided wedge clamp	34	-	44,5	28,5	55,5	14,5	M16