

Spacers for multi-clamping system workpiece stop

Item description/product images



Description

Material:
Carbon steel.

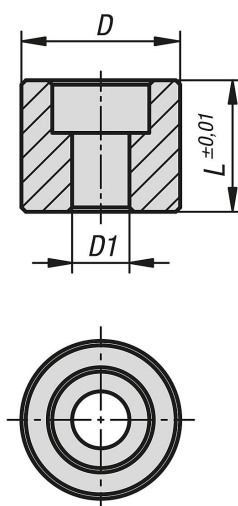
Version:
Tempered and flat faces ground (HRC 32).

Note:
The spacer for the workpiece stop is used to extend the lateral stop dimension.

Application:
The spacer is screwed onto the side of the fixed jaw together with the workpiece stop.

Advantages:
Increases the adjustment range of the lateral end stop.

Drawings



Overview of items

Spacers for multi-clamping system workpiece stop

Order No.	suitable for system width	L	D	D1 for screw to DIN 912
K1756.05010	50/72	10	18	M6
K1756.05015	50/72	15	18	M6
K1756.05023	50/72	23	18	M6
K1756.10015	100	15	25	M8
K1756.10020	100	20	25	M8
K1756.10025	100	25	25	M8

