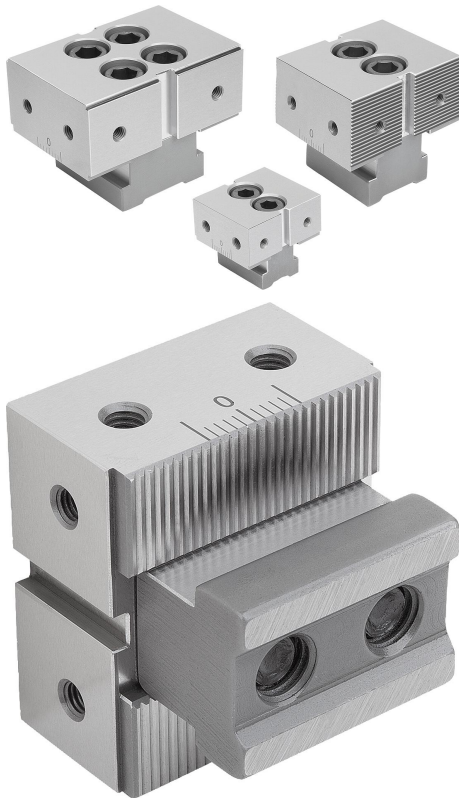


Fixed jaws DS for multi-clamping system

Item description/product images



Description

Material:

Tool steel.

Version:

Hardened and ground (HRC 55 ±2).

Note:

There are three different fixed jaw versions to choose from:

- Smooth version Form A for pre-machined workpieces.
- Serrated version Form B for raw parts.
- Offset jaws Form C for clamping with a small clamping edge.

The lateral fastening holes are used to fasten workpiece end stops. The two screw-on holes on the clamping surfaces also allow seating ledges to be mounted so as to optimise the clamping depth of the workpieces.

Technical data:

The maximum clamping forces and the tightening torques given for the respective system widths for the K1828, K1829 and K1830 product families must be observed.

Application:

The DS fixed jaws are positioned on the clamping rails according to the clamping situation.

When the fastening screw is tightened, the tothing allows a form-fit connection to be created.

Fixed jaws with two fastening screws are to be preferred where higher machining forces are to be applied.

Advantages:

The lateral scale on the clamping rails and the fixed jaws allows precise positioning of the fixed stops.

Supplied with:

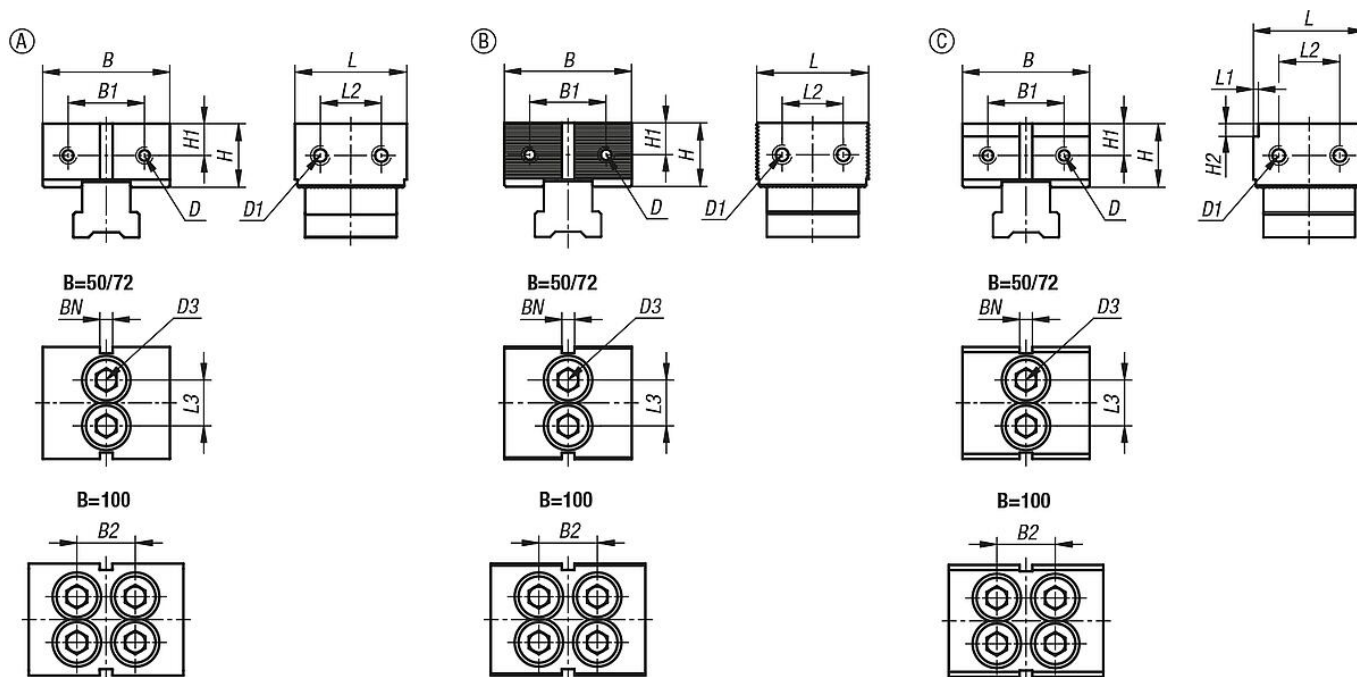
DS fixed jaw.

Fastening screw.

Slot key.

Fixed jaws DS for multi-clamping system

Drawings



Overview of items

Fixed jaws DS for multi-clamping system

Order No.	suitable for system width	Form	Form definition	L	B	H	L1	L2	L3	B1	B2	H1	H2	D Internal thread	D1 internal thread	D3	BN=Slot width
K1751.0504401	50	A	smooth	44	50	25	-	24	18	30	-	12,5	-	M5	M6	M10x30	5
K1751.0504402	50	B	serrated	44	50	25	-	24	18	30	-	12,5	-	M5	M6	M10x30	5
K1751.0504423	50	C	stepped	44	50	25	2	24	18	30	-	12,5	2	M5	M6	M10x30	5
K1751.0504453	50	C	stepped	44	50	25	2	24	18	30	-	12,5	5	M5	M6	M10x30	5
K1751.0726501	72	A	smooth	65	72	40	-	35	25	44	-	21,5	-	M6	M6	M14x1,5x50	8
K1751.0726502	72	B	serrated	65	72	40	-	35	25	44	-	21,5	-	M6	M6	M14x1,5x50	8
K1751.0726523	72	C	stepped	65	72	40	2	35	25	44	-	21,5	2	M6	M6	M14x1,5x50	8
K1751.0726553	72	C	stepped	65	72	40	2	35	25	44	-	21,5	5	M6	M6	M14x1,5x50	8
K1751.1007001	100	A	smooth	70	100	43	-	35	30	64	26	22	-	M8	M8	M14x1,5x50	10
K1751.1007002	100	B	serrated	70	100	43	-	35	30	64	26	22	-	M8	M8	M14x1,5x50	10
K1751.1007023	100	C	stepped	70	100	43	2	35	30	64	26	22	2	M8	M8	M14x1,5x50	10
K1751.1007053	100	C	stepped	70	100	43	2	35	30	64	26	22	5	M8	M8	M14x1,5x50	10