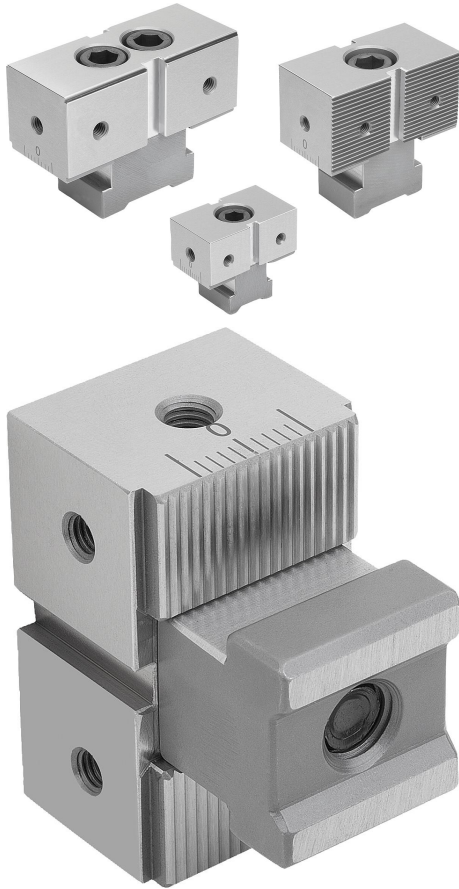


## Fixed jaws ES for multi-clamping system

### Item description/product images



### Description

**Material:**

Tool steel.

**Version:**

Hardened and ground (HRC 55 ±2).

**Note:**

There are three different fixed jaw versions to choose from:

- Smooth version Form A for pre-machined workpieces.
- Serrated version Form B for raw parts.
- Offset jaws Form C for clamping with a small clamping edge.

The lateral fastening holes are used to fasten workpiece end stops. The two screw-on holes on the clamping surfaces also allow seating ledges to be mounted so as to optimise the clamping depth of the workpieces.

**Technical data:**

The maximum clamping forces and the tightening torques given for the respective system widths for the K1828, K1829 and K1830 product families must be observed.

**Application:**

The ES fixed jaws are positioned on the clamping rails according to the clamping situation. When the fastening screw is tightened, the tothing allows a form-fit connection to be created. This allows high retaining forces to be carried through the clamping elements. With its slim design, the ES fixed jaw is especially suitable for clamping processes with smaller workpieces and large batch sizes. This also means that large production batches can be processed economically.

**Advantages:**

The lateral scale on the clamping rails and the fixed jaws allows precise positioning of the fixed stops.

**Supplied with:**

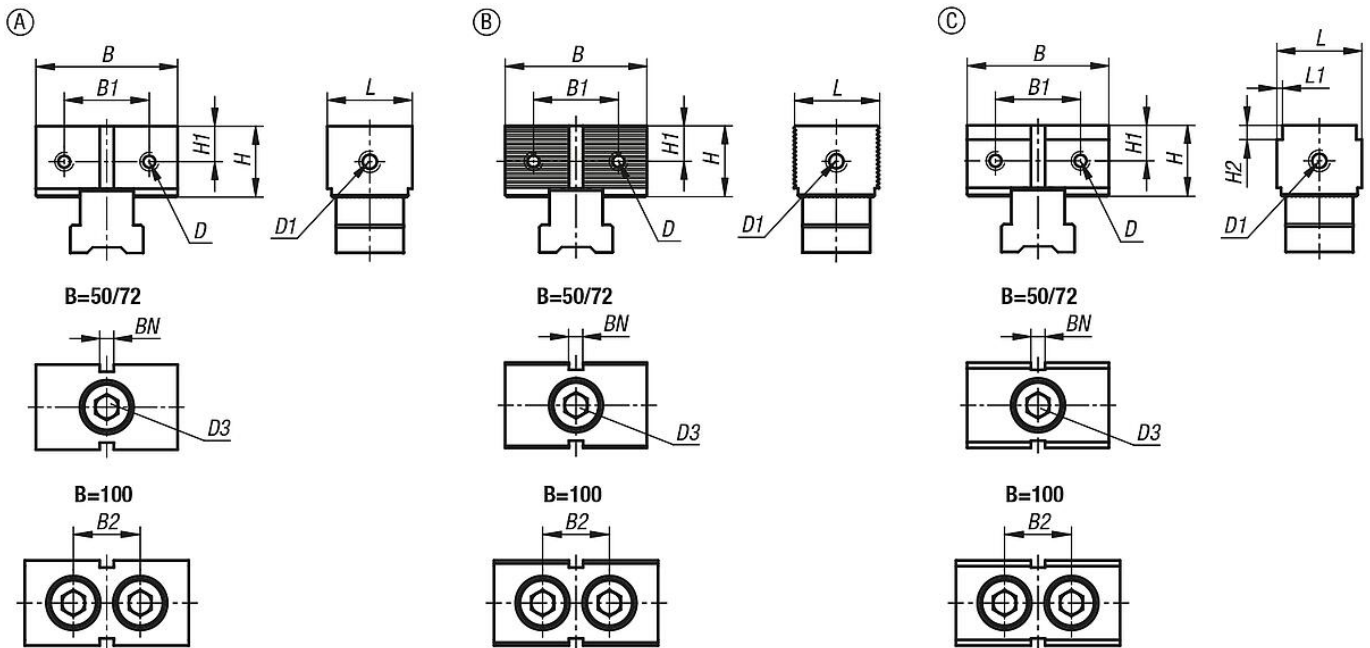
ES fixed jaw.

Fastening screw.

Slot key.

# Fixed jaws ES for multi-clamping system

## Drawings



## Overview of items

### Fixed jaws ES for multi-clamping system

Order No.	suitable for system width	Form	Form definition	L	B	H	L1	B1	B2	H1	H2	D Internal thread	D1 internal thread	D3	BN=Slot width
K1750.0503001	50	A	smooth	30	50	25	-	30	-	12,5	-	M5	M6	M10x30	5
K1750.0503002	50	B	serrated	30	50	25	-	30	-	12,5	-	M5	M6	M10x30	5
K1750.0503023	50	C	stepped	30	50	25	2	30	-	12,5	2	M5	M6	M10x30	5
K1750.0503053	50	C	stepped	30	50	25	2	30	-	12,5	5	M5	M6	M10x30	5
K1750.0724001	72	A	smooth	40	72	40	-	44	-	21,5	-	M6	M6	M14x1,5x50	8
K1750.0724002	72	B	serrated	40	72	40	-	44	-	21,5	-	M6	M6	M14x1,5x50	8
K1750.0724023	72	C	stepped	40	72	40	2	44	-	21,5	2	M6	M6	M14x1,5x50	8
K1750.0724053	72	C	stepped	40	72	40	2	44	-	21,5	5	M6	M6	M14x1,5x50	8
K1750.1004401	100	A	smooth	44	100	43	-	64	26	22	-	M8	M8	M14x1,5x50	10
K1750.1004402	100	B	serrated	44	100	43	-	64	26	22	-	M8	M8	M14x1,5x50	10
K1750.1004423	100	C	stepped	44	100	43	2	64	26	22	2	M8	M8	M14x1,5x50	10
K1750.1004453	100	C	stepped	44	100	43	2	64	26	22	5	M8	M8	M14x1,5x50	10