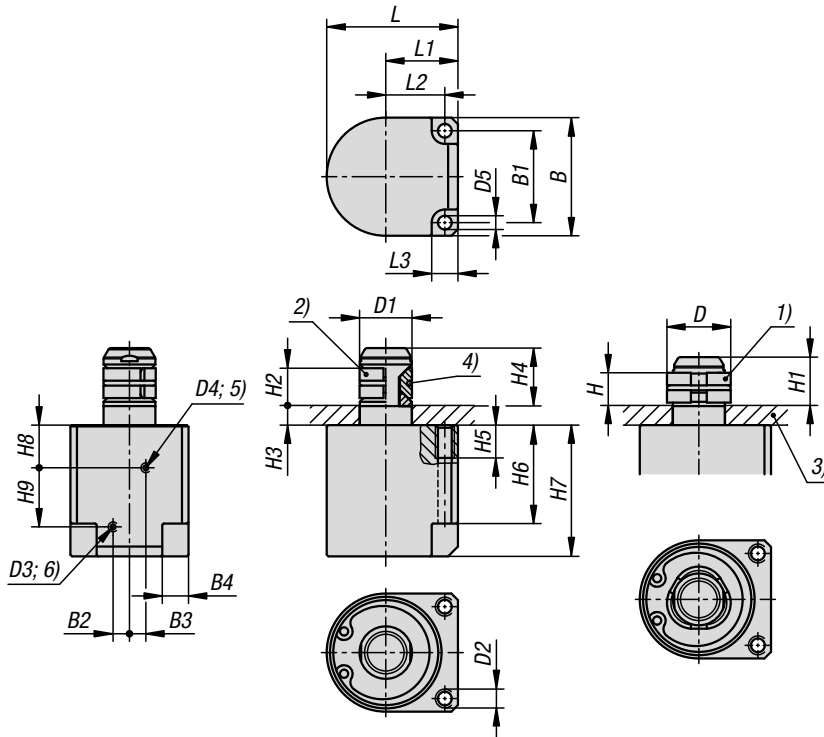


## Centring clamp stainless steel

pneumatic



Workpieces are clamped and released by compressed air.  
The possible clamping diameter is from 16 to 20 mm.

**Material:**  
Body, stainless steel.  
Seal, NBR.

**Version:**  
Stainless steel bright.

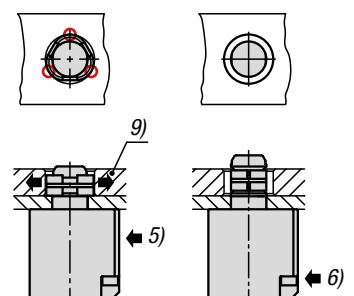
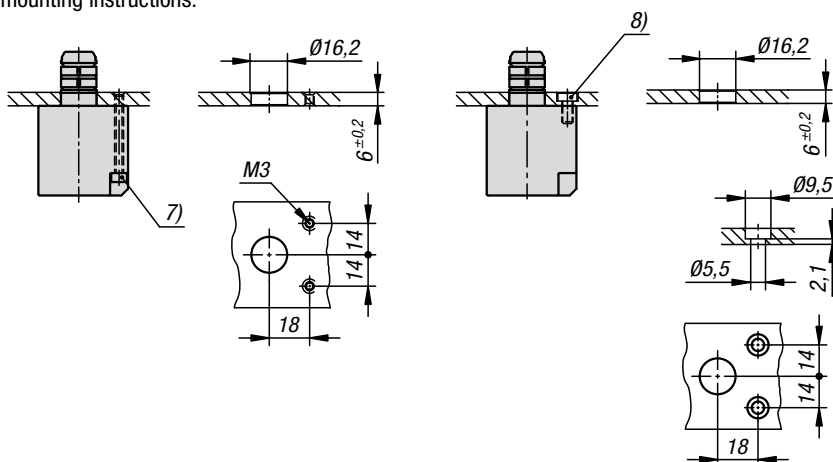
**Sample order:**  
K1742.16

**Note for ordering:**  
Cylinder head screws M4X35 for fastening from below are included with delivery.  
Cylinder head screws with low head M5 for fastening from above are not included with delivery.

**Note:**  
Installed dimensions for plate thickness 6 mm.  
The stated retaining forces are related to an operating pressure of 0.5 Mpa and a surface quality of Ra 1.6 µm.  
Repeat accuracy in this case is ±0.2 mm.

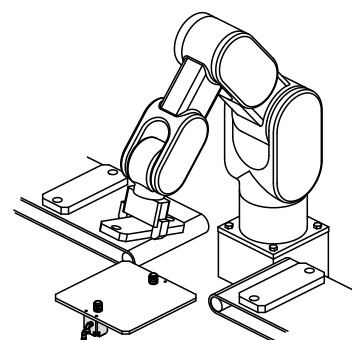
- Drawing reference:**
- 1) „Clamping“ position
  - 2) „Release“ position
  - 3) Mounting plate
  - 4) O-ring
  - 5) „Clamping“ connection
  - 6) „Release“ connection
  - 7) Cylinder head screw M4
  - 8) Cylinder screw with low head M5
  - 9) Workpiece

mounting instructions:



## Centring clamp stainless steel

pneumatic



### KIPP Centring clamp stainless steel, pneumatic

| Order No.       | B  | B1 | B2 | B3 | B4  | D  | D1 | D2 | D3 | D4 | D5  | H  | H1   | H2   |
|-----------------|----|----|----|----|-----|----|----|----|----|----|-----|----|------|------|
| <b>K1742.16</b> | 36 | 28 | 5  | 5  | 7,5 | 20 | 16 | M5 | M3 | M3 | 4,2 | 10 | 14,7 | 11,3 |

| Order No.       | H3 | H4   | H5 | H6 | H7 | H8 | H9 | L  | L1 | L2 | L3 | Holding force N | Operating pressure MPa |
|-----------------|----|------|----|----|----|----|----|----|----|----|----|-----------------|------------------------|
| <b>K1742.16</b> | 6  | 17,5 | 10 | 30 | 40 | 13 | 18 | 40 | 22 | 18 | 8  | 77              | 0,3 - 0,7              |