

Locating adapters, flange, stainless steel

pneumatic



**Clamped using compressed air. If the pressure fails, tension is retained by a spring.
A spring force of 6 N must be overcome to release the positioning adapters using compressed air.**

Material:
Body, stainless steel.
Seal, NBR.

Version:
Stainless steel bright.

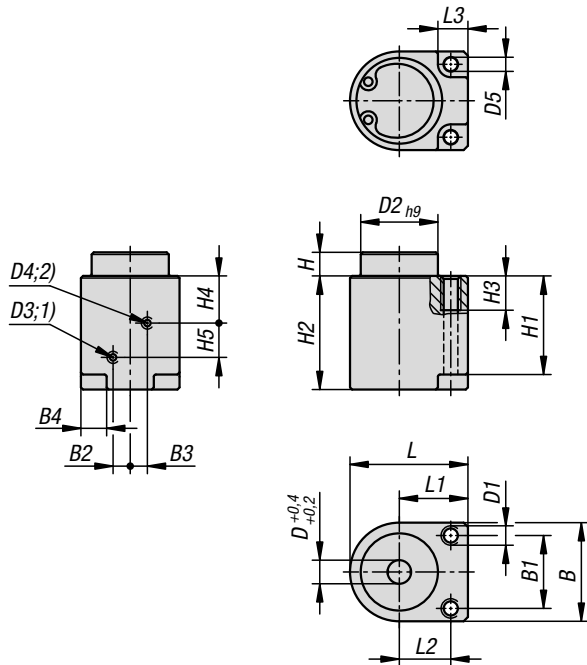
Sample order:
K1741.0618

Note for ordering:
M3x28 cap screws for fastening from below are supplied.
M4 cap screws for fastening from above are not supplied.

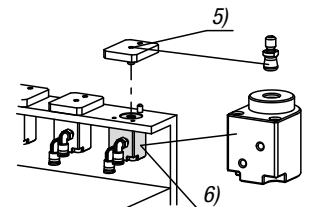
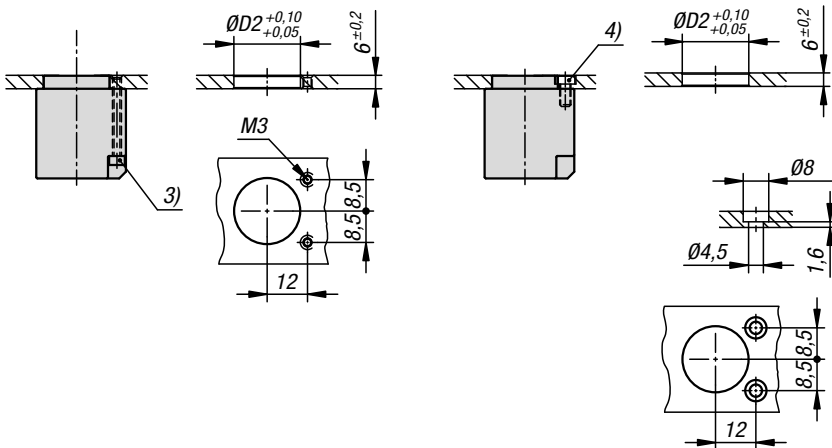
Note:
Installed dimensions for plate thickness 6 mm.
The stated clamping and retaining forces are related to an operating pressure of 0.5 Mpa.
When using several positioning units, the distance tolerance of ± 0.1 mm should not be exceeded.
Repeat accuracy ± 0.2 mm.

Accessories:
Clamping pins K1564.

- Drawing reference:**
- 1) „Clamping“ connection
 - 2) „Release“ connection
 - 3) M3 cap screw
 - 4) M4 cap screw
 - 5) Clamping pin
 - 6) Locating fixture



mounting instructions:



KIPP Locating adapters, flange, stainless steel, pneumatic

Order No.	B	B1	B2	B3	B4	D	D1	D2	D3	D4	D5	H	H1	H2
K1741.0618	23	17	4	4	6	6	M4	18	M3	M3	3,3	5,5	23	26,5

Order No.	H3	H4	H5	L	L1	L2	L3	Operating pressure MPa	F=clamping force N (Pneu. clamped)	F1=Retaining force N (spring-loaded)	Holding force N
K1741.0618	8	11	8	27,5	16	12	7	0,3 - 0,7	40	6	100