

## Lateral spring plungers

with plastic spring



**Material:**

Sleeve and spring plastic  
Thrust pin steel, stainless steel or POM

**Version:**

Thrust pin (steel) case-hardened and black oxidised.  
Thrust pin (stainless steel) bright  
Thrust pin (POM) white.

**Sample order:**

K1733.100307

**Note:**

Lateral spring plungers are used for positioning, holding and fastening workpieces in applications where there is increased presence of dirt. For example: painting and sandblasting.

**Calculation dimension X:**

$Y > L_1 - D_1/2$ , therefore  $X = D_1/2 - S$

$Y < L_1 - D_1/2$ , therefore  $X = D_1/2 - S - (L_1 - D_1/2 - Y) * 0,123$

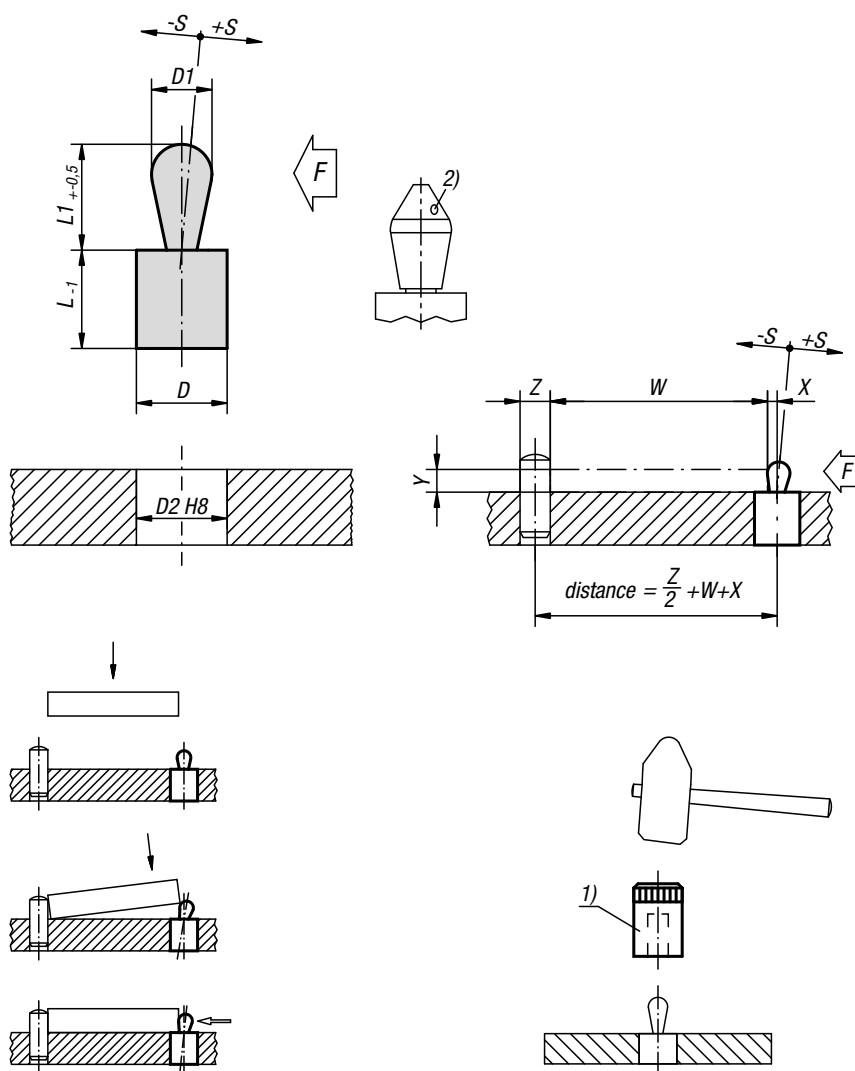
Light spring force = blue spring

Standard spring force = red spring

Strong spring force = green spring

**Assembly:**

The sleeve is pressed into the hole. It is recommended to moisten the sleeve before assembly.



### KIPP Lateral spring plungers, steel thrust pins

Order No.	Version 1	Version 2	D	D1	D2	L	L1	±S	F ca.N	Order No. assembly tool
K1733.100307	light spring force	different pin form	6	3	5,9	7	3,7	0,4	10	K1733.03
K1733.100409	light spring force	-	8	4	7,9	9	5,2	0,6	15	K1733.04
K1733.100509	light spring force	-	10	5	9,9	9	7,3	0,8	30	K1733.05
K1733.100609	light spring force	-	10	6	9,9	9	10,3	1	20	K1733.05
K1733.200307	standard spring force	different pin form	6	3	5,9	7	3,7	0,4	20	K1733.03
K1733.200409	standard spring force	-	8	4	7,9	9	5,2	0,6	30	K1733.04
K1733.200509	standard spring force	-	10	5	9,9	9	7,3	0,8	60	K1733.05
K1733.200609	standard spring force	-	10	6	9,9	9	10,3	1	30	K1733.05
K1733.200813	standard spring force	-	12	8	11,9	13	13,3	1,2	50	K1733.08
K1733.201016	standard spring force	-	16	10	15,9	16	16,9	1,6	80	K1733.10
K1733.300509	intensified spring force	-	10	5	9,9	9	7,3	0,8	90	K1733.05
K1733.300609	intensified spring force	-	10	6	9,9	9	10,3	1	60	K1733.05
K1733.300813	intensified spring force	-	12	8	11,9	13	13,3	1,2	100	K1733.08
K1733.301016	intensified spring force	-	16	10	15,9	16	16,9	1,6	160	K1733.10

# Lateral spring plungers

with plastic spring

## Drawing reference:

- 1) Assembly tool
- 2) Some sizes have a different pin form

Y = workpiece height  
W = workpiece length  
X = coordinate dimension  
Z = stop diameter



## KIPP Lateral spring plungers, stainless steel thrust pins

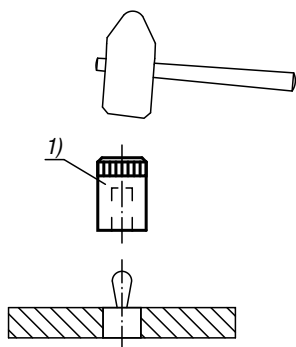
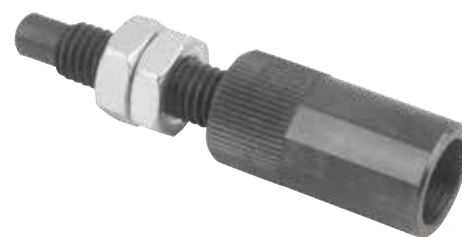
Order No.	Version 1	Version 2	D	D1	D2	L	L1	±S	F ca.N	Order No. assembly tool
K1733.110307	light spring force	different pin form	6	3	2,9	7	3,7	0,4	10	K1733.03
K1733.110409	light spring force	-	8	4	7,9	9	5,2	0,6	15	K1733.04
K1733.110509	light spring force	-	10	5	9,9	9	7,3	0,8	30	K1733.05
K1733.110609	light spring force	-	10	6	9,9	9	10,3	1	20	K1733.05
K1733.210307	standard spring force	different pin form	6	3	5,9	7	3,7	0,4	20	K1733.03
K1733.210409	standard spring force	-	8	4	7,9	9	5,2	0,6	30	K1733.04
K1733.210509	standard spring force	-	10	5	9,9	9	7,3	0,8	60	K1733.05
K1733.210609	standard spring force	-	10	6	9,9	9	10,3	1	30	K1733.05
K1733.210813	standard spring force	-	12	8	11,9	13	13,3	1,2	50	K1733.08
K1733.211016	standard spring force	-	16	10	15,9	16	16,9	1,6	80	K1733.10
K1733.310509	intensified spring force	-	10	5	9,9	9	7,3	0,8	90	K1733.05
K1733.310609	intensified spring force	-	10	6	9,9	9	10,3	1	60	K1733.05
K1733.310813	intensified spring force	-	12	8	11,9	13	13,2	1,2	100	K1733.08
K1733.311016	intensified spring force	-	16	10	15,9	16	16,6	1,6	160	K1733.10

## KIPP Lateral spring plungers, POM thrust pins

Order No.	Version 1	Version 2	D	D1	D2	L	L1	±S	F ca.N	Order No. assembly tool
K1733.120307	light spring force	different pin form	6	3	5,9	7	3,7	0,4	10	K1733.03
K1733.120409	light spring force	-	8	4	7,9	9	5,2	0,6	15	K1733.04
K1733.120509	light spring force	-	10	5	9,9	9	7,3	0,8	30	K1733.05
K1733.120609	light spring force	-	10	6	9,9	9	10,3	1	20	K1733.05
K1733.220307	standard spring force	different pin form	6	3	5,9	7	3,7	0,4	20	K1733.03
K1733.220409	standard spring force	-	8	4	7,9	9	5,2	0,6	30	K1733.04
K1733.220509	standard spring force	-	10	5	9,9	9	7,3	0,8	60	K1733.05
K1733.220609	standard spring force	-	10	6	9,9	9	10,3	1	30	K1733.05
K1733.220813	standard spring force	-	12	8	11,9	13	13,3	1,2	50	K1733.08
K1733.221016	standard spring force	-	16	10	15,9	16	16,9	1,6	80	K1733.10
K1733.320509	intensified spring force	-	10	5	9,9	9	7,3	0,8	90	K1733.05
K1733.320609	intensified spring force	-	10	6	9,9	9	10,3	1	60	K1733.05
K1733.320813	intensified spring force	-	12	8	11,9	13	13,3	1,2	100	K1733.08
K1733.321016	intensified spring force	-	16	10	15,9	16	16,9	1,6	160	K1733.10

## Assembly tool

for lateral spring plungers with plastic spring



**Material:**  
Steel.

**Version:**  
Black oxidised.

**Sample order:**  
K1733.03

**Note:**  
Lateral spring plungers with plastic pins can be fitted easily using the assembly tool.

**Drawing reference:**  
1) assembly tool

### KIPP Assembly tool for lateral spring plungers with plastic spring

Order No.	Suitable for lateral spring plungers with D =
K1733.03	6
K1733.04	8
K1733.05	10
K1733.08	12
K1733.10	16