

## Side clamp



**Material:**

Carbon steel.

**Version:**

Body black oxidised.  
Clamping face ground.

**Sample order:**

K1697.0900

**Note:**

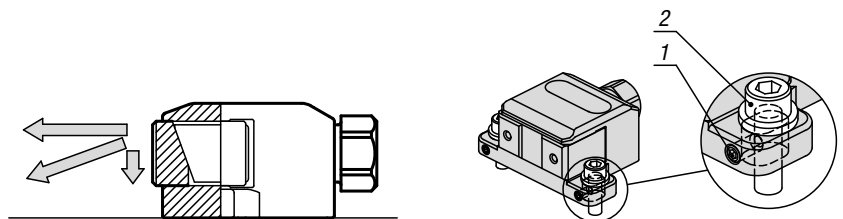
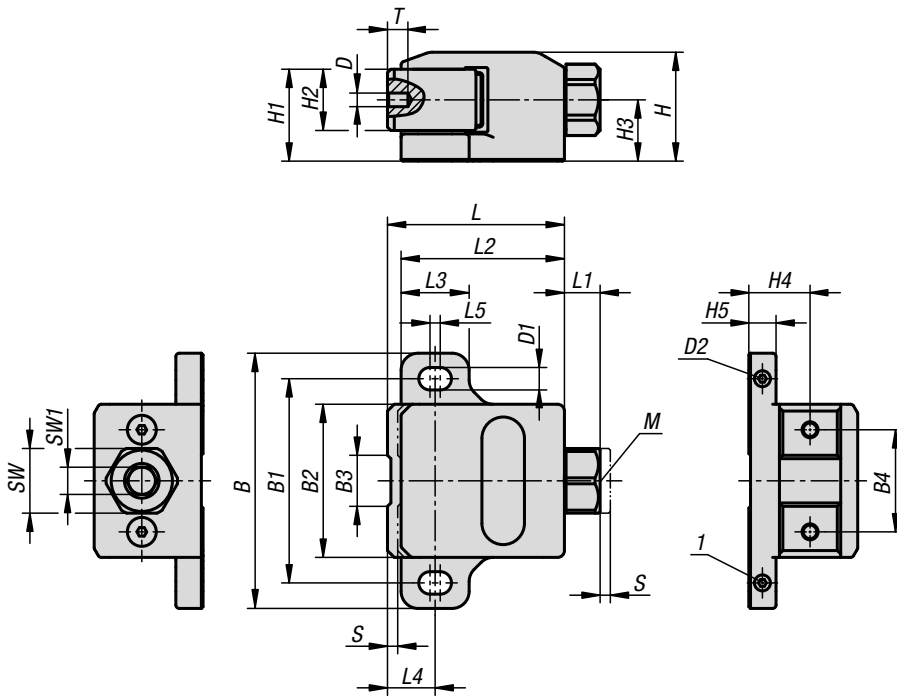
Tighten the setscrew to prevent the side clamp sliding back during the clamping process.

**Advantages:**

- High clamping force
- Ground clamping face
- Pull-down force prevents the workpiece lifting

**Drawing reference:**

- 1) Setscrew
- 2) Cap screw



### KIPP Side clamp

| Order No.  | B   | B1 | B2 | B3 | B4 | D  | D1  | D2   | H  | H1 | H2 | H3 | H4 | H5 | L  | L1 | L2 | L3 | L4 | L5 | SW | SW1 | T | Travel S | Clamping force kN | Tightening torque max. Nm |
|------------|-----|----|----|----|----|----|-----|------|----|----|----|----|----|----|----|----|----|----|----|----|----|-----|---|----------|-------------------|---------------------------|
| K1697.0900 | 75  | 60 | 45 | 15 | 30 | M4 | 6,6 | M4x6 | 32 | 27 | 18 | 18 | 18 | 8  | 52 | 10 | 48 | 20 | 14 | 3  | 19 | 8   | 6 | 3        | 9                 | 25                        |
| K1697.1400 | 100 | 80 | 60 | 20 | 40 | M5 | 8,6 | M5x8 | 40 | 33 | 22 | 22 | 22 | 10 | 69 | 13 | 63 | 26 | 19 | 4  | 24 | 10  | 8 | 4        | 14                | 50                        |