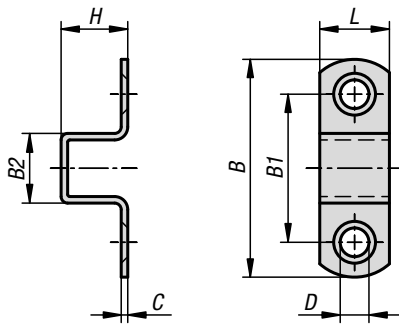


## Catch plates steel or brass

for barrel locks with return spring



**Material:**

Steel or brass.

**Version:**

Steel zinc-plated.

Brass chromed.

**Sample order:**

K1669.16500

**Note:**

The catch plates can be simply screwed onto the application.



### KIPP Catch plates steel or brass, for lock grip with return spring

Order No. steel	Order No. brass	B	B1	B2	C	D	H	L
K1669.11350	K1669.11351	35	23	11,5	1,2	3,5	11,5	11
K1669.16500	K1669.16501	50	34	16	1,5	4,8	16	16
K1669.22680	K1669.22651	68,5	43,5	21	2	7	21	22