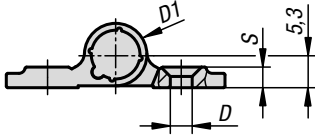


## Spring hinges

aluminium profile, 0.7 Nm, long version



**Material:**

Aluminium 6060 T5.  
Cover plug PA 6.6.

**Version:**

Black anodised.  
Colourless anodised.

**Sample order:**

K1666.359001

**Note:**

The hinges are equipped with an integrated steel tension spring. This enables automatic opening and closing of doors and hatches.  
Opening angle 270°.

Opening spring torque:

$M(0^\circ) : 0.7 \text{ Nm} / M(90^\circ) : 0.5 \text{ Nm} / M(180^\circ) : 0.3 \text{ Nm}$

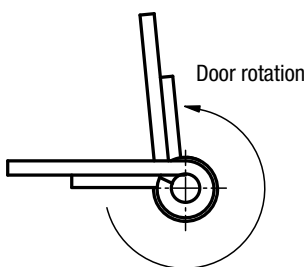
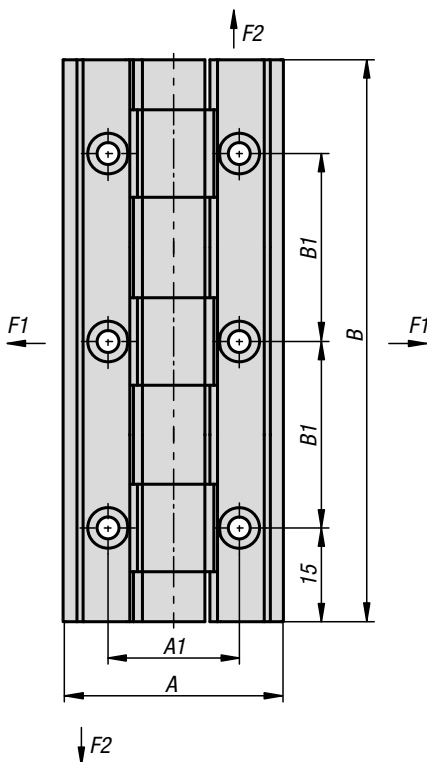
Fastened using DIN 7991 countersunk screws.

The loading values given for the hinges are non-binding reference values without consideration of safety factors and exclude any liability. The values given are for information purposes only and do not constitute a legally binding assurance of properties. These load values were determined under laboratory conditions. Each user must determine individually whether the hinge is suitable for the respective application.

Different materials onto which the hinges are installed and the type of mounting, weather conditions and wear can influence the determined values.

**Temperature range:**

From  $-20^\circ\text{C}$  to  $+80^\circ\text{C}$



Hinges with opening spring

### KIPP Spring hinges aluminium profile, 0.7 Nm, long version

Order No.	Version 1	Main colour	A	A1	B	B1	D	D1	S	F1 N	F2 N
K1666.359001	spring open	black	35	21	90	30	3,5	10	3,3	3400	7000
K1666.35900	spring open	colourless	35	21	90	30	3,5	10	3,3	3400	7000