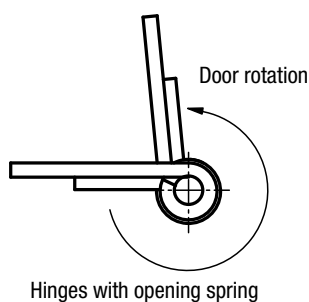
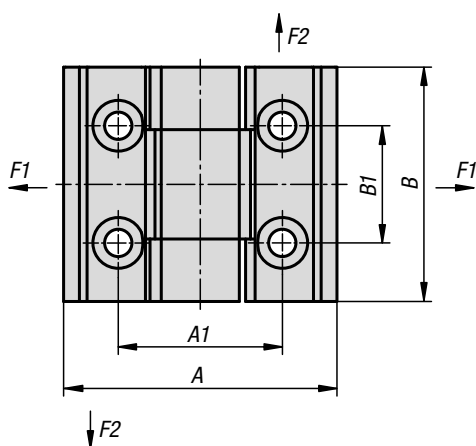
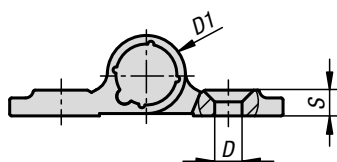


Spring hinges

aluminium profile, 0.50 Nm



Material:

Aluminium 6060 T5.
End caps PA 6.6.
Washers POM.

Version:

Black anodised.
Colourless anodised.

Sample order:

K1665.35600

Note:

The hinges are equipped with an integrated steel tension spring. This enables automatic opening and closing of doors and hatches.
Opening angle 270°.

Opening spring torque:

$M(0^\circ) : 0.48 \text{ Nm} / M(90^\circ) : 0.3 \text{ Nm} / M(180^\circ) : 0.16 \text{ Nm}$

Fastened using DIN 7991 countersunk screws.

The loading values given for the hinges are non-binding reference values without consideration of safety factors and exclude any liability. The values given are for information purposes only and do not constitute a legally binding assurance of properties. These load values were determined under laboratory conditions. Each user must determine individually whether the hinge is suitable for the respective application.

Different materials onto which the hinges are installed and the type of mounting, weather conditions and wear can influence the determined values.

Temperature range:

From -20°C to +80°C

KIPP Spring hinges aluminium profile, 0.50 Nm

| Order No. | Version 1 | Main colour | A | A1 | B | B1 | D | D1 | S | F1 N | F2 N |
|--------------|-------------|-------------|----|----|----|----|-----|----|-----|------|------|
| K1665.354001 | spring open | black | 35 | 21 | 60 | 30 | 3,5 | 10 | 3,3 | 2700 | 4200 |
| K1665.35400 | spring open | colourless | 35 | 21 | 60 | 30 | 3,5 | 10 | 3,3 | 2700 | 4200 |