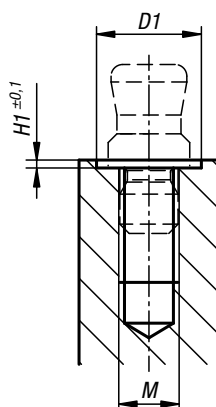
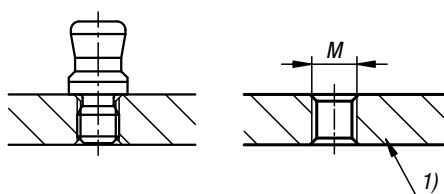
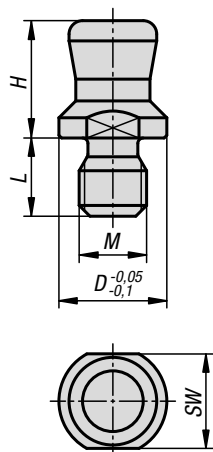


Clamping pin stainless steel



Material:
Stainless steel

Version:
Hardened.

Sample order:
K1564.16

Note:
Colour may differ from image due to curing process.

Method of operation:
Screw the clamping pin into the thread and tighten.
See assembly drawing.

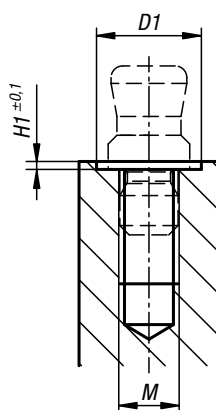
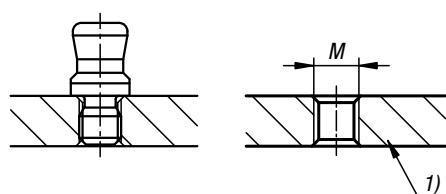
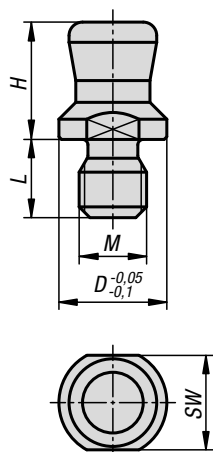
Accessories:
Quarter-turn latches K1561.
Push button latches K1562.
Locating fixture round K1740.
Locating fixture flange K1741.

Drawing reference:
1) plate

KIPP Clamping pin stainless steel

Order No.	D	D1	H	H1	L	M	SW
K1564.16	6	7	7,6	0,5	5,8	M04X0,7	5
K1564.18	8	9	8,7	0,5	5,8	M05X0,8	7

Clamping pin stainless steel



Material:
Stainless steel

Version:
Hardened.

Sample order:
K1564.16

Note:
Colour may differ from image due to curing process.

Method of operation:
Screw the clamping pin into the thread and tighten.
See assembly drawing.

Accessories:
Quarter-turn latches K1561.
Push button latches K1562.
Locating fixture round K1740.
Locating fixture flange K1741.

Drawing reference:
1) plate

KIPP Clamping pin stainless steel

Order No.	D	D1	H	H1	L	M	SW
K1564.16	6	7	7,6	0,5	5,8	M04X0,7	5
K1564.18	8	9	8,7	0,5	5,8	M05X0,8	7