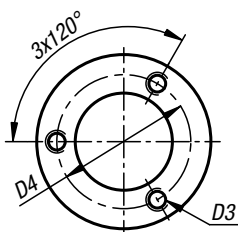
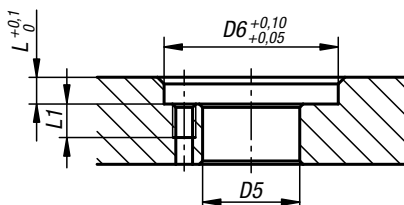
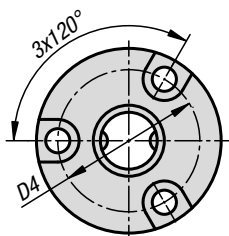
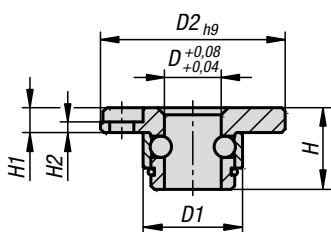


## Clamping plates steel

for quarter-turn clamp locks



Clamping plate recessed  
for plate thickness > 9 mm



**Material:**  
Housing steel.

**Version:**  
Housing nickel-plated.

**Sample order:**  
K1560.801

**Note:**  
Stainless steel M3 fastening screws are included.  
Mounting option for plate thickness starting from 9 mm.

**Accessories:**  
quarter-turn clamp lock K1559.

### KIPP Steel clamping plates for quarter-turn clamp locks

Order No.	D	D1	D2	D3	D4	D5	D6	H	H1	H2	L	L1
K1560.801	8	14	26	M3x0,5	20	14,5	26	11,5	3,5	1,5	4	5