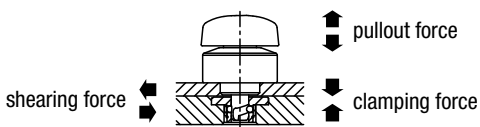
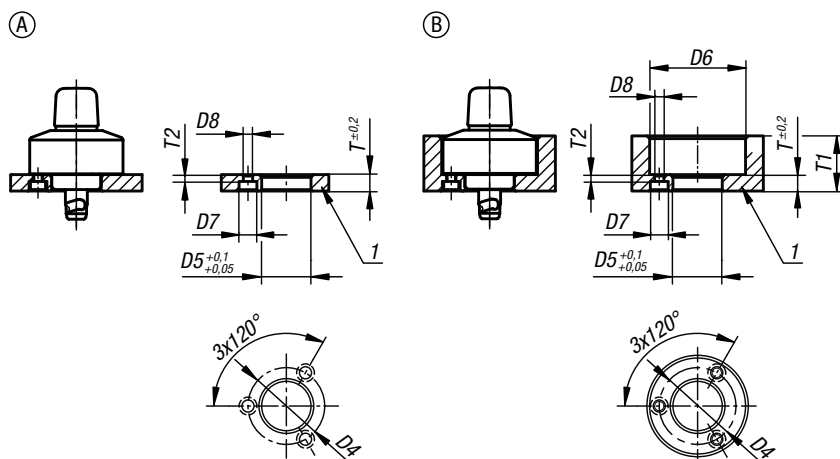
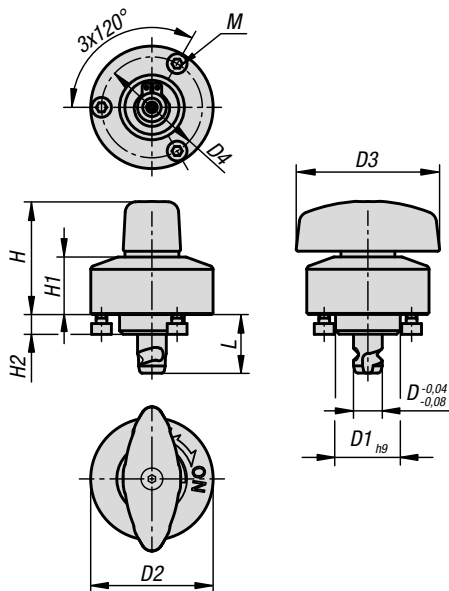


Quarter-turn clamp locks, stainless steel

twist knob plastic or stainless steel



Quarter-turn clamp locks are used for replacing and locking fixtures or hatches quickly and easily. Toolless clamping shortens setup times.

Material:
Stainless steel housing.
Bolt steel.
Rotary knob stainless steel or thermoplastic PA (polyamide)

Version:
Housing bright.
Bolt nickel plated.
Rotary knob PA fibreglass reinforced, black.
Rotary knob stainless steel, bright.

Sample order:
K1559.816

Note:
Stainless steel M3 fastening screws are included.
Form A mounting option for plate thickness 6 mm.
Form B mounting option for plate thickness > 6 to 14 mm.

Method of operation:
Check that the rotary knob is in the „OFF“ position.
Set the quarter-turn clamp lock in the premounted clamping plate.
Turn the rotary knob to the „ON“ position.
When fully clamped, a click sound is heard.

Accessories:
Clamping plates K1560

Drawing reference:
1) plate

KIPP Quarter-turn clamp locks stainless steel, knob plastic or stainless steel

Order No.	Component material	Version 2	D	L	D1	D2	D3	D4	H	H1	H2	M	D5	D6	D7	D8	T	T1	T2
K1559.816	polyamide	pins steel	8	16,3	18	34	40	28	31,5	16	5,5	M03X0,5	18	35	6,5	3,4	6	6-20	2,5
K1559.8161	stainless steel	pins steel	8	16,3	18	34	40	28	31,5	16	5,5	M03X0,5	18	35	6,5	3,4	6	6-20	2,5

KIPP Quarter-turn clamp lock, technical information

Order No.	Component material	Version 2	D	L	Clamping force N	Shearing force kN	Pullout force kN	Temperature resistance
K1559.816	polyamide	pins steel	8	16,3	400	4,8	1,6	≤130 °C / ≤200 °C
K1559.8161	stainless steel	pins steel	8	16,3	400	4,8	1,6	≤130 °C / ≤200 °C