

Threaded insert, steel, self-tapping

type B



Material:

Steel.

Version:

Steel, case hardened, electro zinc-plated.

Sample order:

K1538.08

Note:

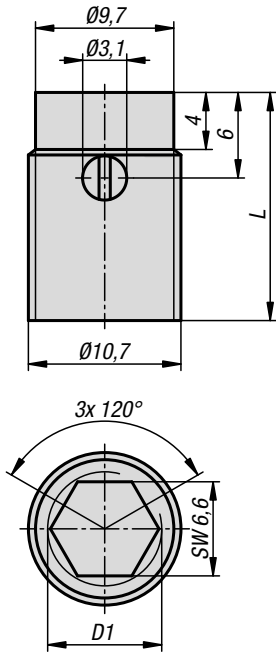
Self-tapping threaded inserts for making high-strength, wear-free, vibration-resistant fastenings in aluminium profiles.

To reduce the thread size from M10 to M8.

Only suitable for aluminium profiles with a core hole diameter of 10 mm.

Accessories:

Assembly tool K1538.808.

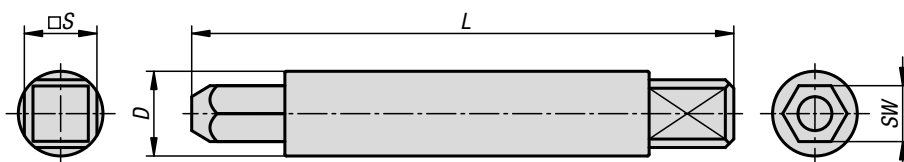


KIPP Threaded insert, steel, self-tapping, type B

Order No.	D1	L length	for Art. No.
K1538.08	M8	16	K1538.808

Assembly tool, steel

for self-tapping threaded inserts, type B



Material:
Steel.

Version:
Manual assembly tool, electro zinc-plated.

Sample order:
K1538.808

Note:
Inserts are screwed in using this manual assembly tool together with a tap wrench, socket set, cordless screwdriver etc.



KIPP Assembly tool, steel, for self-tapping threaded inserts type B

Order No.	SW	L length	S	D
K1538.808	6,6	64	8	10