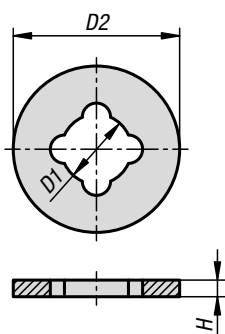


Washers plastic

captive



Material:
Polyamide.

Version:
white.

Sample order:
K1526.05

Note:
The washers are vibration dampers and protect the screw connection during e.g. pre-assembly. The washers also protect the surface from damage. Only suitable for threads with undercut i.e. ring bolts

Application:
Press or twist the washers over the thread.

Attention:
When shim washers with rings bolts are used, the forces specified for the ring bolts cannot be guaranteed.



KIPP Captive washers, plastic

Order No.	D1	D2	G	H
K1526.05	4,3	10	M5	0,5
K1526.06	5,1	12	M6	0,5
K1526.08	6,2	14	M8	0,5
K1526.10	8,4	20	M10	1
K1526.12	9,8	20	M12	1
K1526.16	13,5	28	M16	1