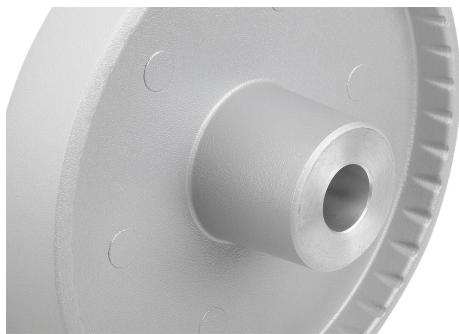
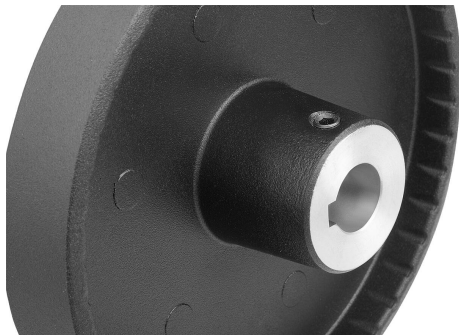
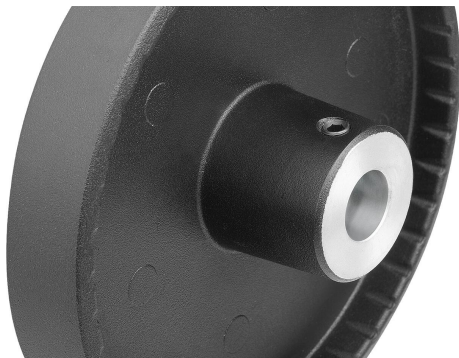


Disc handwheels, aluminium with fold-down cylindrical grip

Item description/product images



Description

Material:

Handwheel aluminium.
Cylinder grip and hub cover black thermoplastic.
Cylinder grip pin black oxidised steel.
ISO 4027 grub screw, steel grade 45 H, black.

Version:

Black or silver powder-coated.

With reamed hole.

With reamed hole and keyway.

With reamed hole and transverse bore.

With reamed hole, keyway and transverse bore.

Note:

Wheel rim radial and axial run-out ≤ 0.4 mm.

Assembly:

The hub cover is supplied unassembled.

The handwheels can be secured to a shaft using a transverse pin or by parallel key connection together with a DIN 6912 cap screw and a handwheel washer K0173.

By the versions with transverse bore, fixation is carried out using an ISO 4027 grub screw.

Supplied with:

Aluminium handwheel.

Hub cover.

Fold-down cylinder grip.

ISO 4027 grub screw (type with transverse bore).

Accessory:

K0173 Handwheel washers.

K1160 Socket head screws with low head DIN 6912.

Drawing reference:

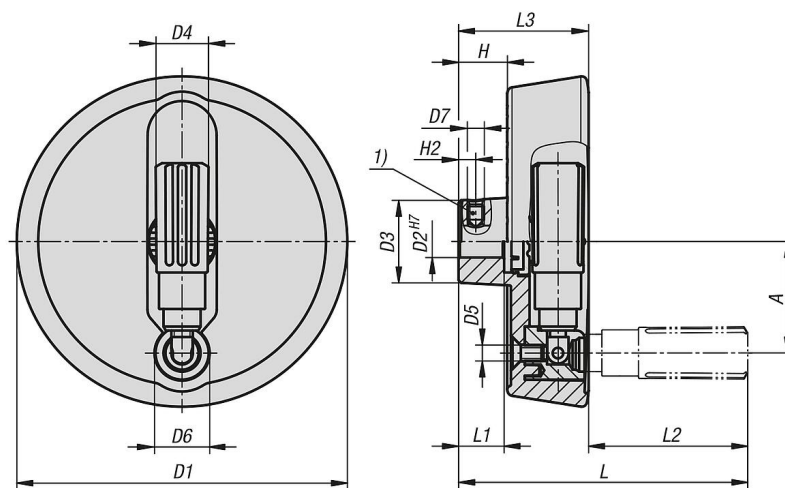
1) Position of the transverse bore to the keyway is offset by 90° .

Disc handwheels, aluminium with fold-down cylindrical grip

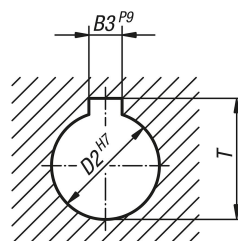
Item description/product images



Drawings



DIN 6885-1



Overview of items

Disc handwheels, aluminium with fold-down cylindrical grip

Disc handwheels, aluminium with fold-down cylindrical grip

Overview of items

| Order No. | Main colour | Form | Form definition | A | B3 | D1 | D2 | D3 | D4 | D5 | D6 | D7 | H | H2 | L | L1 | L2 | L3 | T |
|-----------------|-------------|------|--|----|----|-----|----|----|------|----|----|----|------|-----|-------|----|------|----|------|
| K1522.1001016 | black | A | reamed hole with tranverse bore | 33 | - | 100 | 10 | 28 | 16 | M5 | 16 | M6 | 17,4 | 5,5 | 92,5 | 17 | 47,5 | 45 | - |
| K1522.1001216 | black | A | reamed hole with tranverse bore | 33 | - | 100 | 12 | 28 | 16 | M5 | 16 | M6 | 17,4 | 6,5 | 92,5 | 17 | 47,5 | 45 | - |
| K1522.1251216 | black | A | reamed hole with tranverse bore | 42 | - | 125 | 12 | 31 | 19,9 | M6 | 20 | M6 | 18,3 | 6,5 | 105,5 | 18 | 56,5 | 49 | - |
| K1522.1251416 | black | A | reamed hole with tranverse bore | 42 | - | 125 | 14 | 31 | 19,9 | M6 | 20 | M6 | 18,3 | 6,5 | 105,5 | 18 | 56,5 | 49 | - |
| K1522.1401416 | black | A | reamed hole with tranverse bore | 50 | - | 140 | 14 | 36 | 19,9 | M6 | 20 | M6 | 20,3 | 6,5 | 109 | 19 | 58 | 51 | - |
| K1522.1401616 | black | A | reamed hole with tranverse bore | 50 | - | 140 | 16 | 36 | 19,9 | M6 | 20 | M6 | 20,3 | 8 | 109 | 19 | 58 | 51 | - |
| K1522.1601416 | black | A | reamed hole with tranverse bore | 56 | - | 160 | 14 | 36 | 25,5 | M8 | 26 | M6 | 20,1 | 6,5 | 139 | 20 | 82 | 57 | - |
| K1522.1601616 | black | A | reamed hole with tranverse bore | 56 | - | 160 | 16 | 36 | 25,5 | M8 | 26 | M6 | 20,1 | 8 | 139 | 20 | 82 | 57 | - |
| K1522.2001816 | black | A | reamed hole with tranverse bore | 73 | - | 200 | 18 | 42 | 25,5 | M8 | 26 | M6 | 26,1 | 8 | 145 | 24 | 82 | 63 | - |
| K1522.2002016 | black | A | reamed hole with tranverse bore | 73 | - | 200 | 20 | 42 | 25,5 | M8 | 26 | M6 | 26,1 | 8 | 145 | 24 | 82 | 63 | - |
| K1522.1001026 | silver | A | reamed hole with tranverse bore | 33 | - | 100 | 10 | 28 | 16 | M5 | 16 | M6 | 17,4 | 5,5 | 92,5 | 17 | 47,5 | 45 | - |
| K1522.1001226 | silver | A | reamed hole with tranverse bore | 33 | - | 100 | 12 | 28 | 16 | M5 | 16 | M6 | 17,4 | 6,5 | 92,5 | 17 | 47,5 | 45 | - |
| K1522.1251226 | silver | A | reamed hole with tranverse bore | 42 | - | 125 | 12 | 31 | 19,9 | M6 | 20 | M6 | 18,3 | 6,5 | 105,5 | 18 | 56,5 | 49 | - |
| K1522.1251426 | silver | A | reamed hole with tranverse bore | 42 | - | 125 | 14 | 31 | 19,9 | M6 | 20 | M6 | 18,3 | 6,5 | 105,5 | 18 | 56,5 | 49 | - |
| K1522.1401426 | silver | A | reamed hole with tranverse bore | 50 | - | 140 | 14 | 36 | 19,9 | M6 | 20 | M6 | 20,3 | 6,5 | 109 | 19 | 58 | 51 | - |
| K1522.1401626 | silver | A | reamed hole with tranverse bore | 50 | - | 140 | 16 | 36 | 19,9 | M6 | 20 | M6 | 20,3 | 8 | 109 | 19 | 58 | 51 | - |
| K1522.1601426 | silver | A | reamed hole with tranverse bore | 56 | - | 160 | 14 | 36 | 25,5 | M8 | 26 | M6 | 20,1 | 6,5 | 139 | 20 | 82 | 57 | - |
| K1522.1601626 | silver | A | reamed hole with tranverse bore | 56 | - | 160 | 16 | 36 | 25,5 | M8 | 26 | M6 | 20,1 | 8 | 139 | 20 | 82 | 57 | - |
| K1522.2001826 | silver | A | reamed hole with tranverse bore | 73 | - | 200 | 18 | 42 | 25,5 | M8 | 26 | M6 | 26,1 | 8 | 145 | 24 | 82 | 63 | - |
| K1522.2002026 | silver | A | reamed hole with tranverse bore | 73 | - | 200 | 20 | 42 | 25,5 | M8 | 26 | M6 | 26,1 | 8 | 145 | 24 | 82 | 63 | - |
| K1522.100101036 | black | B | reamed hole with slot, with tranverse bore | 33 | 3 | 100 | 10 | 28 | 16 | M5 | 16 | M6 | 17,4 | 5,5 | 92,5 | 17 | 47,5 | 45 | 11,4 |
| K1522.100121046 | black | B | reamed hole with slot, with tranverse bore | 33 | 4 | 100 | 12 | 28 | 16 | M5 | 16 | M6 | 17,4 | 6,5 | 92,5 | 17 | 47,5 | 45 | 13,8 |
| K1522.125121046 | black | B | reamed hole with slot, with tranverse bore | 42 | 4 | 125 | 12 | 31 | 19,9 | M6 | 20 | M6 | 18,3 | 6,5 | 105,5 | 18 | 56,5 | 49 | 13,8 |
| K1522.125141056 | black | B | reamed hole with slot, with tranverse bore | 42 | 5 | 125 | 14 | 31 | 19,9 | M6 | 20 | M6 | 18,3 | 6,5 | 105,5 | 18 | 56,5 | 49 | 16,3 |
| K1522.140141056 | black | B | reamed hole with slot, with tranverse bore | 50 | 5 | 140 | 14 | 36 | 19,9 | M6 | 20 | M6 | 20,3 | 6,5 | 109 | 19 | 58 | 51 | 16,3 |
| K1522.140161056 | black | B | reamed hole with slot, with tranverse bore | 50 | 5 | 140 | 16 | 36 | 19,9 | M6 | 20 | M6 | 20,3 | 8 | 109 | 19 | 58 | 51 | 18,3 |
| K1522.160141056 | black | B | reamed hole with slot, with tranverse bore | 56 | 5 | 160 | 14 | 36 | 25,5 | M8 | 26 | M6 | 20,1 | 6,5 | 139 | 20 | 82 | 57 | 16,3 |
| K1522.160161056 | black | B | reamed hole with slot, with tranverse bore | 56 | 5 | 160 | 16 | 36 | 25,5 | M8 | 26 | M6 | 20,1 | 8 | 139 | 20 | 82 | 57 | 18,3 |
| K1522.200181066 | black | B | reamed hole with slot, with tranverse bore | 73 | 6 | 200 | 18 | 42 | 25,5 | M8 | 26 | M6 | 26,1 | 8 | 145 | 24 | 82 | 63 | 20,8 |
| K1522.200201066 | black | B | reamed hole with slot, with tranverse bore | 73 | 6 | 200 | 20 | 42 | 25,5 | M8 | 26 | M6 | 26,1 | 8 | 145 | 24 | 82 | 63 | 22,8 |
| K1522.100102036 | silver | B | reamed hole with slot, with tranverse bore | 33 | 3 | 100 | 10 | 28 | 16 | M5 | 16 | M6 | 17,4 | 5,5 | 92,5 | 17 | 47,5 | 45 | 11,4 |
| K1522.100122046 | silver | B | reamed hole with slot, with tranverse bore | 33 | 4 | 100 | 12 | 28 | 16 | M5 | 16 | M6 | 17,4 | 6,5 | 92,5 | 17 | 47,5 | 45 | 13,8 |
| K1522.125122046 | silver | B | reamed hole with slot, with tranverse bore | 42 | 4 | 125 | 12 | 31 | 19,9 | M6 | 20 | M6 | 18,3 | 6,5 | 105,5 | 18 | 56,5 | 49 | 13,8 |
| K1522.125142056 | silver | B | reamed hole with slot, with tranverse bore | 42 | 5 | 125 | 14 | 31 | 19,9 | M6 | 20 | M6 | 18,3 | 6,5 | 105,5 | 18 | 56,5 | 49 | 16,3 |
| K1522.140142056 | silver | B | reamed hole with slot, with tranverse bore | 50 | 5 | 140 | 14 | 36 | 19,9 | M6 | 20 | M6 | 20,3 | 6,5 | 109 | 19 | 58 | 51 | 16,3 |
| K1522.140162056 | silver | B | reamed hole with slot, with tranverse bore | 50 | 5 | 140 | 16 | 36 | 19,9 | M6 | 20 | M6 | 20,3 | 8 | 109 | 19 | 58 | 51 | 18,3 |
| K1522.160142056 | silver | B | reamed hole with slot, with tranverse bore | 56 | 5 | 160 | 14 | 36 | 25,5 | M8 | 26 | M6 | 20,1 | 6,5 | 139 | 20 | 82 | 57 | 16,3 |
| K1522.160162056 | silver | B | reamed hole with slot, with tranverse bore | 56 | 5 | 160 | 16 | 36 | 25,5 | M8 | 26 | M6 | 20,1 | 8 | 139 | 20 | 82 | 57 | 18,3 |
| K1522.200182066 | silver | B | reamed hole with slot, with tranverse bore | 73 | 6 | 200 | 18 | 42 | 25,5 | M8 | 26 | M6 | 26,1 | 8 | 145 | 24 | 82 | 63 | 20,8 |
| K1522.200202066 | silver | B | reamed hole with slot, with tranverse bore | 73 | 6 | 200 | 20 | 42 | 25,5 | M8 | 26 | M6 | 26,1 | 8 | 145 | 24 | 82 | 63 | 22,8 |
| K1522.10010103 | black | C | reamed hole with slot | 33 | 3 | 100 | 10 | 28 | 16 | M5 | 16 | - | 17,4 | - | 92,5 | 17 | 47,5 | 45 | 11,4 |
| K1522.10012104 | black | C | reamed hole with slot | 33 | 4 | 100 | 12 | 28 | 16 | M5 | 16 | - | 17,4 | - | 92,5 | 17 | 47,5 | 45 | 13,8 |
| K1522.12512104 | black | C | reamed hole with slot | 42 | 4 | 125 | 12 | 31 | 19,9 | M6 | 20 | - | 18,3 | - | 105,5 | 18 | 56,5 | 49 | 13,8 |
| K1522.12514105 | black | C | reamed hole with slot | 42 | 5 | 125 | 14 | 31 | 19,9 | M6 | 20 | - | 18,3 | - | 105,5 | 18 | 56,5 | 49 | 16,3 |
| K1522.10010203 | silver | C | reamed hole with slot | 33 | 3 | 100 | 10 | 28 | 16 | M5 | 16 | - | 17,4 | - | 92,5 | 17 | 47,5 | 45 | 11,4 |
| K1522.10012204 | silver | C | reamed hole with slot | 33 | 4 | 100 | 12 | 28 | 16 | M5 | 16 | - | 17,4 | - | 92,5 | 17 | 47,5 | 45 | 13,8 |
| K1522.12512204 | silver | C | reamed hole with slot | 42 | 4 | 125 | 12 | 31 | 19,9 | M6 | 20 | - | 18,3 | - | 105,5 | 18 | 56,5 | 49 | 13,8 |
| K1522.12514205 | silver | C | reamed hole with slot | 42 | 5 | 125 | 14 | 31 | 19,9 | M6 | 20 | - | 18,3 | - | 105,5 | 18 | 56,5 | 49 | 16,3 |
| K1522.100101 | black | E | with reamed hole | 33 | - | 100 | 10 | 28 | 16 | M5 | 16 | - | 17,4 | - | 92,5 | 17 | 47,5 | 45 | - |
| K1522.100121 | black | E | with reamed hole | 33 | - | 100 | 12 | 28 | 16 | M5 | 16 | - | 17,4 | - | 92,5 | 17 | 47,5 | 45 | - |
| K1522.125121 | black | E | with reamed hole | 42 | - | 125 | 12 | 31 | 19,9 | M6 | 20 | - | 18,3 | - | 105,5 | 18 | 56,5 | 49 | - |
| K1522.125141 | black | E | with reamed hole | 42 | - | 125 | 14 | 31 | 19,9 | M6 | 20 | - | 18,3 | - | 105,5 | 18 | 56,5 | 49 | - |
| K1522.100102 | silver | E | with reamed hole | 33 | - | 100 | 10 | 28 | 16 | M5 | 16 | - | 17,4 | - | 92,5 | 17 | 47,5 | 45 | - |
| K1522.100122 | silver | E | with reamed hole | 33 | - | 100 | 12 | 28 | 16 | M5 | 16 | - | 17,4 | - | 92,5 | 17 | 47,5 | 45 | - |
| K1522.125122 | silver | E | with reamed hole | 42 | - | 125 | 12 | 31 | 19,9 | M6 | 20 | - | 18,3 | - | 105,5 | 18 | 56,5 | 49 | - |
| K1522.125142 | silver | E | with reamed hole | 42 | - | 125 | 14 | 31 | 19,9 | M6 | 20 | - | 18,3 | - | 105,5 | 18 | 56,5 | 49 | - |

