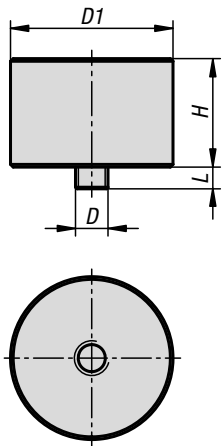


## Pivot bearing, steel

with external thread



**Material:**

Pivot bearing steel 1.0715.  
Threaded pin steel.

**Version:**

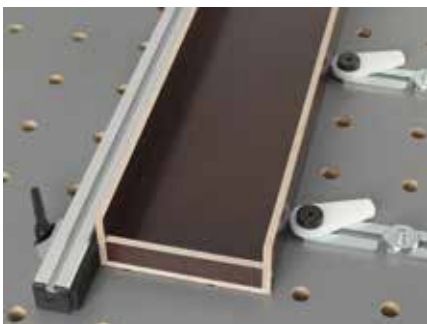
Pivot bearing black oxidised. Screw electro zinc-plated.

**Sample order:**

K1507.3006X04

**Note:**

Pivot bearings are used in combination with plates and a cam clamp for indirect clamping.



**KIPP Pivot bearing steel, with external thread**

Order No.	D	D1	H	L
K1507.3006X04	M6	30	20	4