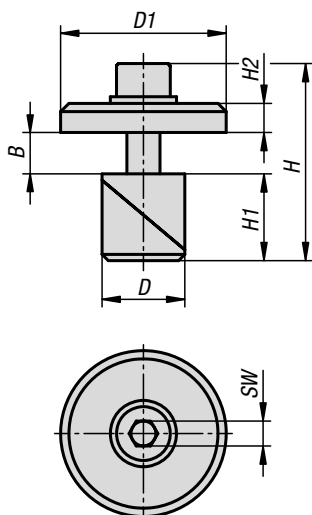


Clamping pin, steel or stainless steel

with washer



Material:

Washer steel 1.0715.

Wedges steel 1.0715 or stainless steel 1.4305.

Version:

Washer electro zinc-plated.

Wedges black oxidised or blank.

Sample order:

K1504.016

Note:

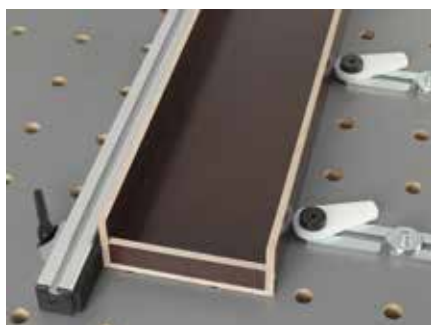
For fixating adapter plates, angles and plates open on grid hole tables or plates with Ø16 mm, Ø20 mm or Ø28 mm holes. Can also be used as a point end stop for positioning and fixating exchange clamping plates. By turning the cap screw, the lock wedges expand in the bore.

Advantages:

Functions also in thin table material (metal: ≥8 mm or ≥4 mm ; wood ≥18 mm).

Gentle clamping in the bore.

Low height.



KIPP Clamping pin steel or stainless steel with washer

Order No.	Main material	D	D1	H	H1	H2	SW	B Clamp range
K1504.016	steel	16	40	48	17,5	7	6	0-14
K1504.120	stainless steel	20	40	48	21	7	6	0-10
K1504.028	steel	28	40	68	28	7	6	0-23