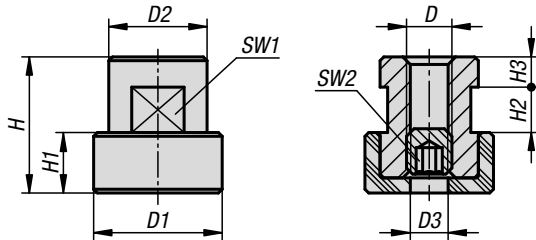


Clamp elements adjustable

for toggle clamp with force sensor



Material:

Spacer sleeve stainless steel.
Grub screw stainless steel.
Protective cap thermoplastic.

Version:

Stainless steel bright.
Thermoplastic black.

Sample order:

K1464.11306X18

Note:

The thermoplastic used is characterised by high mechanical strength and rigidity.

Application:

The clamping element is used to adjust the clamping force of toggle clamps with force sensor. Clamping elements with different heights are available for workpieces with different thicknesses.

KIPP Adjustable clamping elements for toggle clamps with force sensor

| Order No. | Version 1 | D | D1 | D2 | D3 | H | H1 | H2 | H3 | SW1 | SW2 |
|----------------|------------|----|----|----|----|----|----|----|----|-----|-----|
| K1464.11306X18 | adjustable | M6 | 17 | 13 | 5 | 18 | 8 | 6 | 4 | 11 | 3 |
| K1464.11306X21 | adjustable | M6 | 17 | 13 | 5 | 21 | 8 | 6 | 4 | 11 | 3 |
| K1464.11306X23 | adjustable | M6 | 17 | 13 | 5 | 23 | 8 | 6 | 4 | 11 | 3 |
| K1464.11306X26 | adjustable | M6 | 17 | 13 | 5 | 26 | 8 | 6 | 4 | 11 | 3 |
| K1464.11306X29 | adjustable | M6 | 17 | 13 | 5 | 29 | 8 | 6 | 4 | 11 | 3 |
| K1464.11306X32 | adjustable | M6 | 17 | 13 | 5 | 32 | 8 | 6 | 4 | 11 | 3 |
| K1464.11308X22 | adjustable | M8 | 17 | 13 | 5 | 22 | 8 | 8 | 4 | 11 | 4 |
| K1464.11308X25 | adjustable | M8 | 17 | 13 | 5 | 25 | 8 | 8 | 4 | 11 | 4 |
| K1464.11308X28 | adjustable | M8 | 17 | 13 | 5 | 28 | 8 | 8 | 4 | 11 | 4 |
| K1464.11308X31 | adjustable | M8 | 17 | 13 | 5 | 31 | 8 | 8 | 4 | 11 | 4 |
| K1464.11308X34 | adjustable | M8 | 17 | 13 | 5 | 34 | 8 | 8 | 4 | 11 | 4 |
| K1464.11308X37 | adjustable | M8 | 17 | 13 | 5 | 37 | 8 | 8 | 4 | 11 | 4 |
| K1464.11308X40 | adjustable | M8 | 17 | 13 | 5 | 40 | 8 | 8 | 4 | 11 | 4 |
| K1464.11306 | set | M6 | 17 | 13 | 5 | - | 8 | 6 | 4 | 11 | 3 |
| K1464.11308 | set | M8 | 17 | 13 | 5 | - | 8 | 8 | 4 | 11 | 4 |