

Clevis, steel or stainless steel

with male thread



Material:

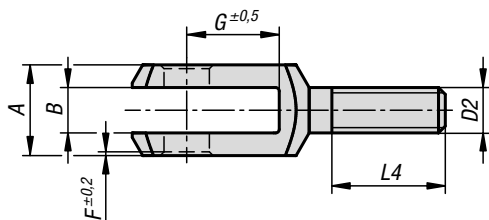
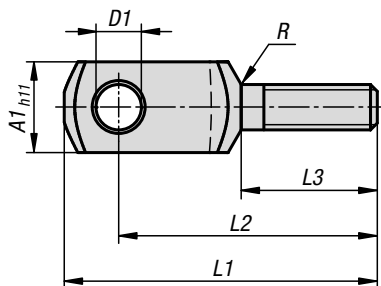
Steel or stainless steel 1.4301.

Version:

Steel electro zinc-plated.
Stainless steel bright.

Sample order:

K1459.0612



KIPP Clevis, steel or stainless steel with male thread

Order No. steel	Order No. stainless steel	A	A1	B	D1	D2	F	G	L1	L2	L3	L4	R
K1459.0612	K1459.10612	12	12	6	6	M6	0,5	12	44	37	20	15	0,8
K1459.0816	K1459.10816	16	16	8	8	M8	0,5	16	57	47	25	20	0,8
K1459.1020	K1459.11020	20	20	10	10	M10	0,5	20	69	57	30	25	0,8
K1459.1224	K1459.11224	24	24	12	12	M12	0,5	24	82	68	35	30	0,8
K1459.1428	K1459.11428	27	27	14	14	M14	1	28	94	78	40	35	1,2
K1459.1632	K1459.11632	32	32	16	16	M16	1	32	108	89	45	40	1,2
K1459.2040	K1459.12040	40	40	20	20	M20	1	40	134	109	55	50	1,5