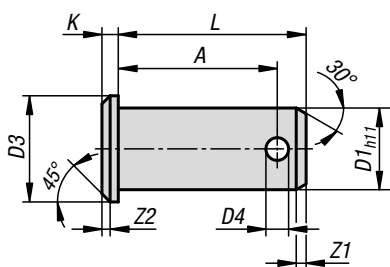


## Pins with split pin hole

suitable for clevis



**Material:**

Steel 1.0718 or stainless steel 1.4305.

**Version:**

Electro zinc-plated steel.

Bright stainless steel.

**Sample order:**

K1456.004100

**Note:**

Pins with a hole, suitable for DIN 71752 clevis. Secured with a split pin.

When combined with a suitable clevis and tang, forms a fully functional clevis joint.



### KIPP Pins with split pin hole suitable for clevis

Order No. steel	Order No. stainless steel	D1	D3	D4	A	K	L	Z1	Z2
K1456.004100	K1456.104100	4	6	1	10	1	12	1	0,5
K1456.005123	K1456.105123	5	8	1,2	12,3	1,5	15	1	0,5
K1456.006153	K1456.106153	6	9	1,6	15,3	1,5	18	1,5	0,5
K1456.008195	K1456.108195	8	12	2	19,5	2	23	2	1
K1456.010245	K1456.110245	10	14	3,2	24,5	2	29	2	1
K1456.012295	K1456.112295	12	17	4	29,5	3	35	2,5	1,5
K1456.014325	K1456.114325	14	19	4	32,5	3	40	2,5	1,5
K1456.016382	K1456.116382	16	21	4	38,2	3	45	2,5	1,5
K1456.020470	K1456.120470	20	26	5	47	4	53	3	2
K1456.025590	K1456.125590	25	32	6,3	59	5	67	4	2
K1456.028632	-	28	34	6,3	63,2	5	72	4	2
K1456.030590	K1456.130590	30	36	6,3	59	5	67	4	2
K1456.030682	-	30	36	6,3	68,2	5	77	4	2
K1456.035765	-	35	44	8	76,5	6	87	5	2
K1456.040900	-	40	48	8	90	6	100	5	2
K1456.042900	-	42	48	8	90	7	100	5	2
K1456.0501030	-	50	58	10	103	7	115	6	2