

Locking washers

for clamping spindles



Material:

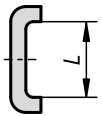
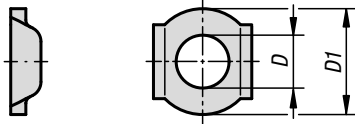
Steel or stainless steel 1.4301.

Version:

Steel electro zinc-plated.
Stainless steel bright.

Sample order:

K1441.0041



KIPP Locking washers for clamping spindles

Order No. steel	Order No. stainless steel	D through hole for	D1	L
K1441.0041	K1441.1041	M4	12,7	8,7
K1441.0051	K1441.1051	M5	12,6	9,7
K1441.0061	K1441.1061	M6	14	12
K1441.0062	K1441.1062	M6	15	13,5
K1441.0081	K1441.1081	M8	22	15,5
K1441.0101	K1441.1101	M10	25	19
K1441.0121	-	M12	33	24
K1441.0161	-	M16	35	27