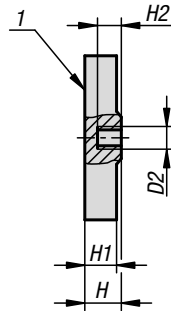
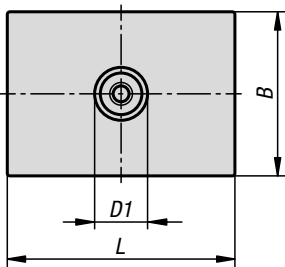


## Magnets with internal thread

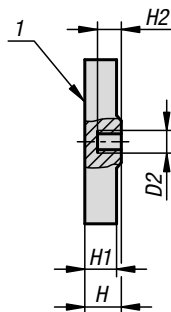
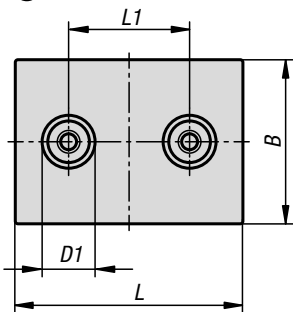
NdFeB, rectangular, with rubber protective jacket



Ⓐ



Ⓑ



**Material:**

Housing steel.  
Magnetic core NdFeB (neodymium).  
Rubber protective jacket TPE.

**Version:**

Housing, electro zinc-plated.  
Black protective rubber jacket.

**Sample order:**

K1396.14331

**Note:**

Magnet with internal thread. Shielded system. With rubber protective jacket for protecting sensitive surfaces. The coefficient of friction is increased by the rubber jacket so that high lateral friction is achieved.

**Temperature range:**

max. 60°C.

**Assembly:**

Optimum hold on thin plate with sensitive surfaces.

**Drawing reference:**

1) magnetic face

**KIPP Magnets with internal thread, NdFeB, rectangular, with rubber protective jacket**

Order No.	Form	B	D1	D2	H	H1	H2	L	L1	Magnetic force N
K1396.14331	A	31	10	M4	6,9	6	4,5	43	-	105
K1396.24331	B	31	10	M4	6,9	6	4,5	43	25	146