

Sockets and plastic inserts



Material:

Socket tool steel.
Insert special PETP.

Version:

Socket chromium-plated.

Sample order:

K1361.1112 (Socket SW11)
K1361.0805 (Plastic insert SW8 for M5 hex head screw)

Note:

Socket:

Socket with 1/2" drive, made by Hazet. Specially modified, for holding the plastic inserts. The plastic inserts are securely held by the inner form and length of the socket. Optimal drive torque is transmitted to the screw head. By careful use, metallic contact between the socket and the hex head is prevented. Contact corrosion is eliminated.

Plastic insert:

Plastic inserts for tightening and loosening the screws and nuts of the KIPP product range NOVOnox hygienic. Polished and sensitive surfaces are protected and a later contact corrosion is avoided.

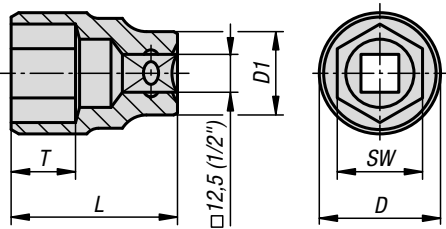
The plastic inserts are made from a specially manufactured PETP and have FDA approval. The inserts are pressed into the special socket manually. The form fit and locking device ensures an optimal hold in the socket. No special tools are required to exchange the worn out inserts.

By a tightening torque of μ 0.12 coefficient of friction (DIN for A4-70 for screws and nuts), the plastic inserts have a life expectancy of up to 1000 alternating cycles.

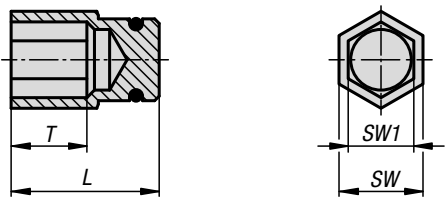
Drawing reference:

- A) Socket
- B) Plastic insert

(A)



(B)



KIPP Sockets

Order No.	D	D1	L	T	SW
K1361.1012	15,3	22	36,6	10,6	10
K1361.1112	16,6	22	37,3	10,1	11
K1361.1312	19,1	22	37,3	10,6	13
K1361.1612	22,9	23,6	37,1	11,3	16
K1361.1912	26,6	23	37	13,2	19
K1361.2112	29	25	36,8	12,9	21
K1361.2712	35,2	25	44,4	18,1	27

KIPP Plastic inserts

Order No.	L	T	SW	SW1	Suitable for hexagon screws
K1361.0704	17,4	5,5	10	7	M4
K1361.0805	18	6	11	8	M5
K1361.1006	19,5	10	13	10	M6
K1361.1308	21,5	11	16	13	M8
K1361.1610	22	13,5	19	16	M10
K1361.1812	21,5	12	21	18	M12
K1361.2416	26,5	18	27	24	M16