

Hinges

weldable, stainless steel



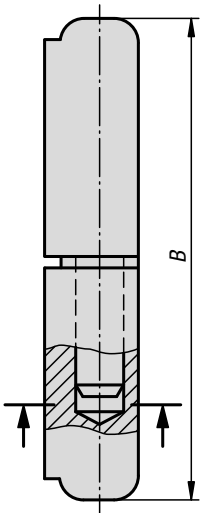
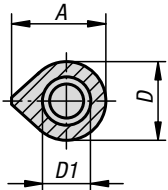
Material:
Stainless steel 1.4404.

Version:
Satin finished.

Sample order:
K1337.013079

Note:
The hinges are made of weldable profile steel.
The pin is fixed into the lower part of the hinge.
The differing steel qualities of the weld and the beam onto which the hinge is welded must be at least equal to or better than:
Stainless steel 1.4404

Advantages:
Resistant to acid and salt water



KIPP Hinges weldable, stainless steel

Order No.	A	B	D	D1
K1337.016080	20	80	16	10
K1337.016100	20	100	16	10
K1337.016120	20	120	16	11