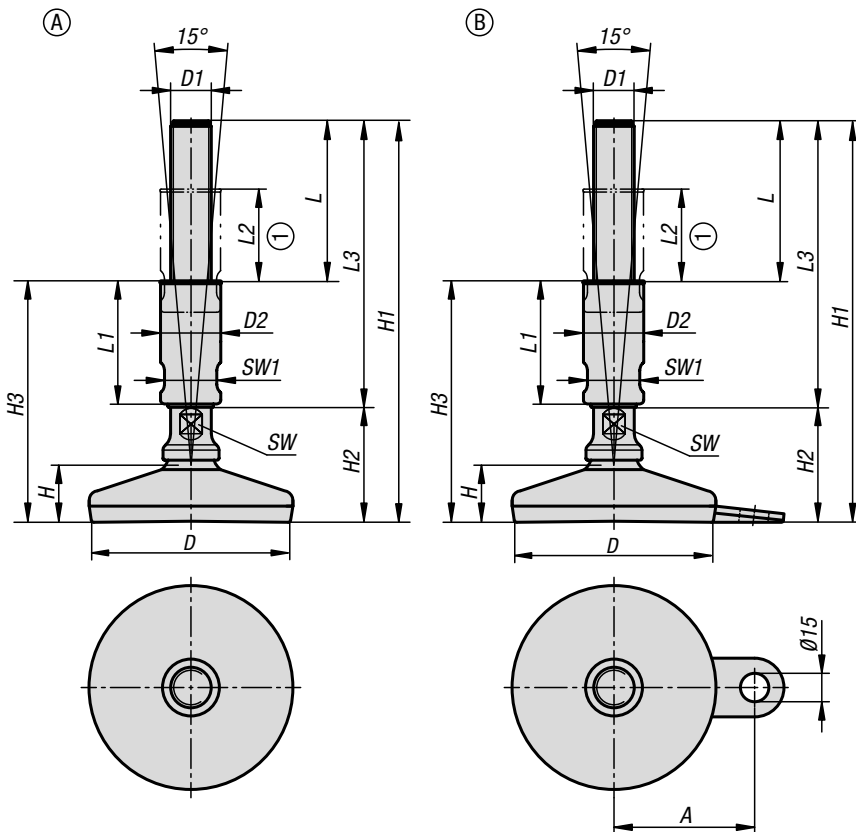


## Levelling feet in Hygienic DESIGN



### Material:

Foot plate and threaded spindle stainless steel 1.4301.  
 Rubber base (NBR) Shore 85 +/-5, FDA tested.  
 Rubber seal, silicone, FDA tested.

### Version:

Foot plate, high-gloss polished.  
 Threaded spindle, bright.  
 Rubber base, black.  
 Rubber seal, blue.

### Sample order:

K1303.108016X140  
 (include length L3)

### Note:

Certified according to 3-A Sanitary Standard.

The high surface quality, the double sealing of the thread and the special seal on the machine foot's spindle joint prevent dirt from sticking and reduce cleaning times to a minimum.

The machine foot is supplied with the 3-A logo.

### Application:

The machine foot is particularly suitable for machines, plants and appliances in the foodstuff industry, breweries, dairies, beverage and pharmaceutical industries.

### Accessories:

Hygienic USIT® seal and shim washer K1491.  
 Hex cap nut with collar K1493.  
 Thread cover K1821.

### Drawing reference:

1) Adjustment range



## KIPP Form A

Order No.	Form	D	D1	D2	H	H1	H2	H3	L	L1	L2	L3	SW	SW1	Load rating max. kN (static load only)
K1303.106012X	A	60	M12	24	23	191/241	51	112/137	79/104	60/85	45/70	140/190	13	20	10
K1303.106016X	A	60	M16	24	23	191/241	51	112/137	79/104	60/85	45/70	140/190	13	20	10
K1303.108016X	A	80	M16	24	25	193/243	53	114/139	79/104	60/85	45/70	140/190	13	20	20
K1303.108020X	A	80	M20	30	25	193/243	53	114/139	79/104	60/85	45/70	140/190	17	26	20
K1303.108024X	A	80	M24	35	25	193/243	53	114/139	79/104	60/85	45/70	140/190	20	30	20
K1303.110016X	A	100	M16	24	28	196/246	56	117/142	79/104	60/85	45/70	140/190	13	20	25
K1303.110020X	A	100	M20	30	28	196/246	56	117/142	79/104	60/85	45/70	140/190	17	26	25
K1303.110024X	A	100	M24	35	28	196/246	56	117/142	79/104	60/85	45/70	140/190	20	30	25
K1303.112016X	A	120	M16	24	32	200/250	60	121/146	79/104	60/85	45/70	140/190	13	20	30
K1303.112020X	A	120	M20	30	32	200/250	60	121/146	79/104	60/85	45/70	140/190	17	26	30
K1303.112024X	A	120	M24	35	32	200/250	60	121/146	79/104	60/85	45/70	140/190	20	30	30

## KIPP Form B with fastening tab

Order No.	Form	A	D	D1	D2	H	H1	H2	H3	L	L1	L2	L3	SW	SW1	Load rating max. kN (static load only)
K1303.206012X	B	45	60	M12	24	23	191/241	51	112/137	79/104	60/85	45/70	140/190	13	20	10
K1303.206016X	B	45	60	M16	24	23	191/241	51	112/137	79/104	60/85	45/70	140/190	13	20	10
K1303.208016X	B	54	80	M16	24	25	193/243	53	114/139	79/104	60/85	45/70	140/190	13	20	20
K1303.208020X	B	54	80	M20	30	25	193/243	53	114/139	79/104	60/85	45/70	140/190	17	26	20
K1303.208024X	B	54	80	M24	35	25	193/243	53	114/139	79/104	60/85	45/70	140/190	20	30	20
K1303.210016X	B	69	100	M16	24	28	196/246	56	117/142	79/104	60/85	45/70	140/190	13	20	25
K1303.210020X	B	69	100	M20	30	28	196/246	56	117/142	79/104	60/85	45/70	140/190	17	26	25
K1303.210024X	B	69	100	M24	35	28	196/246	56	117/142	79/104	60/85	45/70	140/190	20	30	25