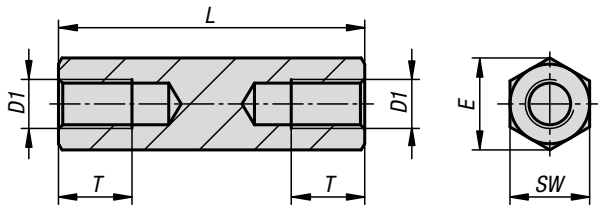


## Extension pieces



**Material:**  
Steel.

**Version:**  
Trivalent blue passivated.

**Sample order:**  
K1302.205025  
(include length L e.g. 025 for L = 25 mm.)

### KIPP Extension pieces

Order No.	D1	E	L	SW	T
K1302.205***	M5	9,2	25/30/35	8	8
K1302.206***	M6	11,5	30/35/40/50/60	10	9
K1302.208***	M8	15	30/35/40/50/60/90	13	12
K1302.210***	M10	18,5	40/45/55/65/95/115	16	15
K1302.212***	M12	20,8	40/45/55/65/95/115	18	18